

# Datasheet | EB04

## EP-382 Series



### General Purpose AC EMI Filter



\*Image shown is for illustrative purpose only

### Approvals /Conformance



### Technical Specifications

Operating voltage	120/250 VAC
Current rating	1A - 10A
Frequency	50/60Hz
Voltage drop	1 Volt max.
High potential test voltage	P -> E 1500VAC P -> N 1414VDC (applicable excluding surge suppressor filter)
Insulation resistance	$\geq 300 \text{ M}\Omega @ 500\text{VDC (PN} \rightarrow \text{E)}$
Operating temperature	40°C / -25°C +85°C

### Features and benefits

- | All filters provide high attenuation performance.
- | All filters compliance to EN60939-3:2015 & EN60939-2:2005 standards.
- | Filter available in panel mounting provision.
- | Single stage.
- | High reliable.
- | CRCA metal can with nickel plating provides good aesthetic and corrosion protection.
- | Input connection through IEC 60320 C14 plug.
- | Output connection with fast-on or wire terminal
- | Filters available in medical version without capacitor to earth.
- | With surge suppressor filters also available.

### Application

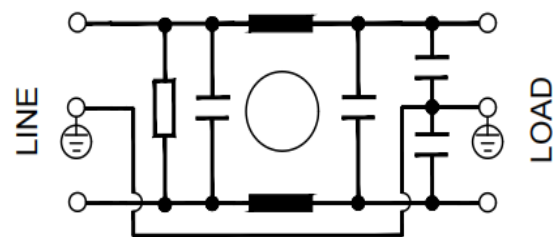
- | Portable electrical and electronic equipment
- | Datacom equipment
- | Control Panel
- | SMPS, single phase power supplies
- | Medical equipment

### Attenuation type

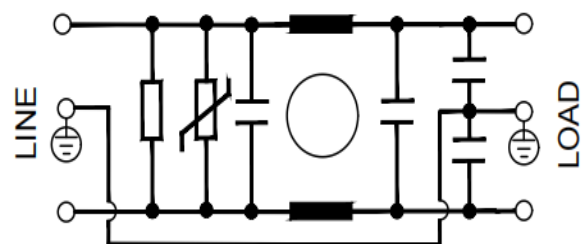
Single Stage **Standard**

### Electrical schematic for filter:

General purpose –



General purpose with surge suppressor –



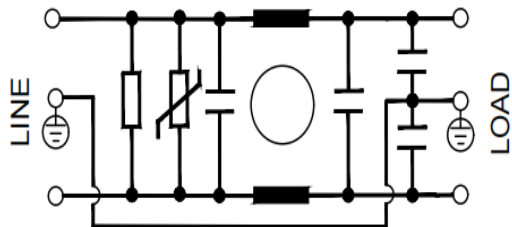
# Datasheet | EB04

## EP-382 Series

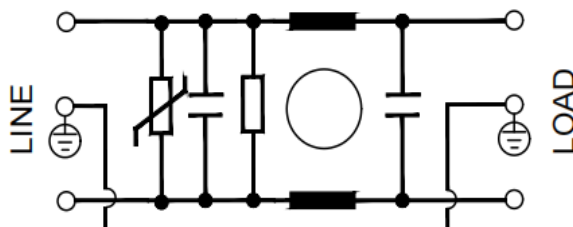
Electrical schematic for filter :



Medical equipment application –

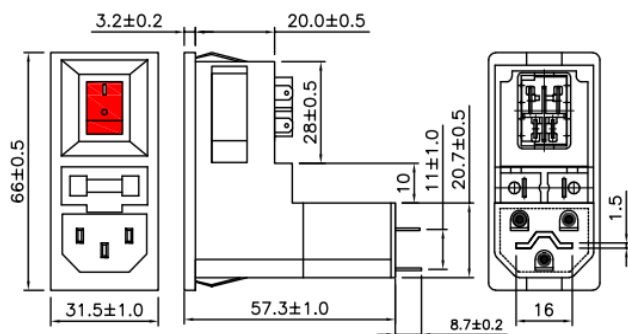


Medical equipment application with surge suppressor -

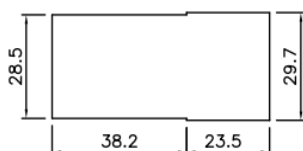


## Mechanical Drawing

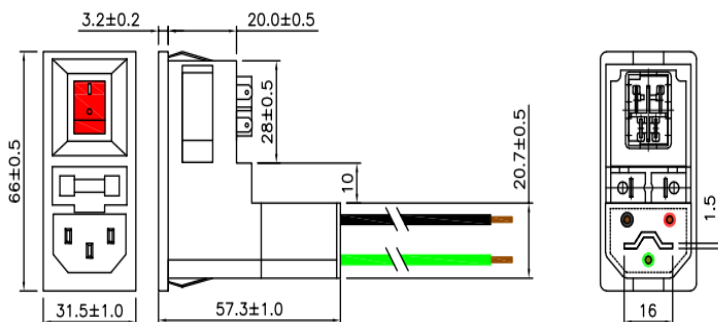
Fast-on terminal



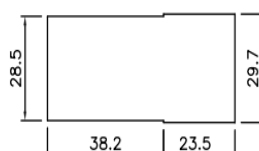
PANEL CUTOUT



Wire terminal



PANEL CUTOUT



\*All dimensions in mm.

## Product Selection Table:

Sr. No.	Elcom part codes (ordering code)	Rated Current rating (A) @40°C	Leakage current (mA) @250VAC	Terminals (X)		Max. Peak current (8/20 μ sec 1 time) (KA)	Energy surge rating (10/1000 μ sec) (Joules)	Approx. weight (gm)	Attenuation
				Fast-on	Wire				
1	EF-1B001X01E-B04	1	< 0.5	C	G	----	----	65	Standard
2	EF-1B001X02E-B04	1	< 0.5	C	G	6.5	175	65	Standard
3	EF-1B001X03E-B04	1	< 0.003	C	G	----	----	65	Standard

# Datasheet | EB04

## EP-382 Series



4	EF-1B001X04E- B04	1	< 0.003	C	G	6.5	175	65	Standard
5	EF-1B003X01E- B04	3	< 0.5	C	G	----	----	65	Standard
6	EF-1B003X02E- B04	3	< 0.5	C	G	6.5	175	65	Standard
7	EF-1B003X03E- B04	3	< 0.003	C	G	----	----	65	Standard
8	EF-1B003X04E- B04	3	< 0.003	C	G	6.5	175	65	Standard
9	EF-1B006X01E- B04	6	< 0.5	C	G	----	----	65	Standard
10	EF-1B006X02E- B04	6	< 0.5	C	G	6.5	175	65	Standard
11	EF-1B006X03E- B04	6	< 0.003	C	G	----	----	65	Standard
12	EF-1B006X04E- B04	6	< 0.003	C	G	6.5	175	65	Standard
13	EF-1B010X01E- B04	10	< 0.5	C	G	----	----	65	Standard
14	EF-1B010X02E- B04	10	< 0.5	C	G	6.5	175	65	Standard
15	EF-1B010X03E- B04	10	< 0.003	C	G	----	----	65	Standard
16	EF-1B010X04E- B04	10	< 0.003	C	G	6.5	175	65	Standard

- To compile complete part number, replace the 'X' with required output connection terminal. (e.g., EF-1B001B01E-B02)
- Maximum leakage under usual AC operating conditions (acc. IEC 60939-3). Note: if the neutral line is interrupted, worst case leakage could reach twice this level.
- Customize products provided on request.

### Connection Method

Current Rating (A)	Fast -on	Wire	Earthing
1, 3 & 6	4.8 X 0.8mm	18AWG	Fast-on/wire leads
10		14AWG	

# Datasheet | EB04

## EP-382 Series



### Filter attenuation graph

C = Common mode (asymmetrical) —————

D = Differential mode (symmetrical) - - - - -

For general purpose

