

Datasheet | EB05

EP-372-F1 Series



General Purpose AC EMI Filter



*Image shown is for illustrative purpose only

Approvals /Conformance



Technical Specifications

| | |
|-----------------------------|---|
| Operating voltage | 120/250 VAC |
| Current rating | 1A - 10A |
| Frequency | 50/60Hz |
| Voltage drop | 1 Volt max. |
| High potential test voltage | P -> E 1500VAC P -> N 1414VDC (applicable excluding surge suppressor filter) |
| Insulation resistance | ≥ 300 MΩ @ 500VDC (PN→E) |
| Operating temperature | 40°C / -25°C +85°C |

Features and benefits

- | All filters provide high attenuation performance.
- | All filters compliance to EN60939-3:2015 & EN60939-2:2005 standards.
- | Filter available in panel mounting provision.
- | Single stage.
- | High reliable.
- | CRCA metal can with nickel plating provides good aesthetic and corrosion protection.
- | Input connection through IEC 60320 C14 plug.
- | Output connection with fast-on or wire terminal
- | Filters available in medical version without capacitor to earth.
- | With surge suppressor filters also available.

Application

- | Portable electrical and electronic equipment
- | Datacom equipment
- | Control Panel
- | Medical equipment
- | SMPS
- | Test and measurement equipment's

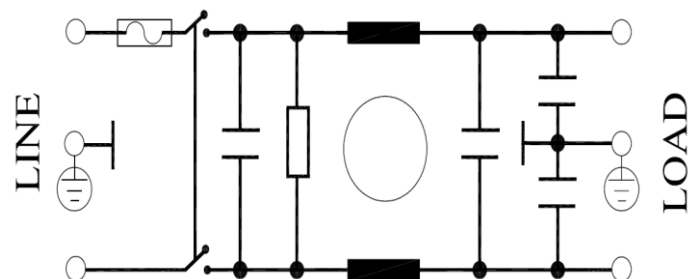
Attenuation type

Single Stage

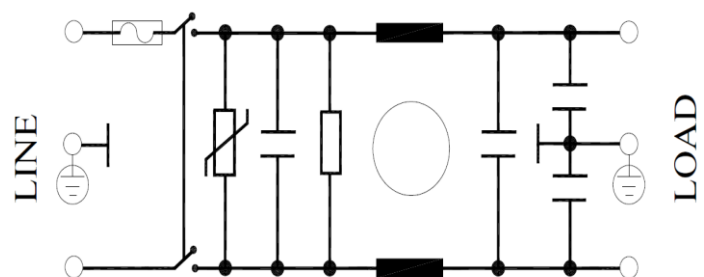
Standard

Electrical schematic for filter:

General purpose –



General purpose with surge suppressor –



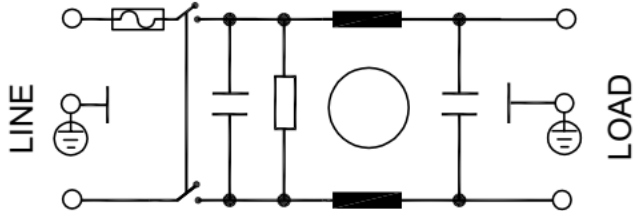
Datasheet | EB05

EP-372-F1 Series

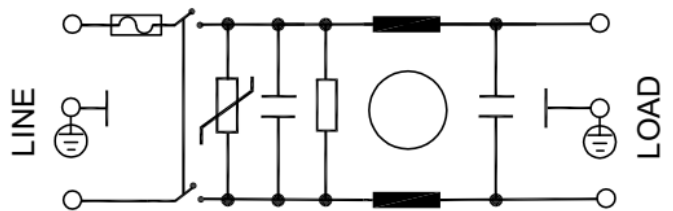


Electrical schematic for filter :

Medical equipment application –

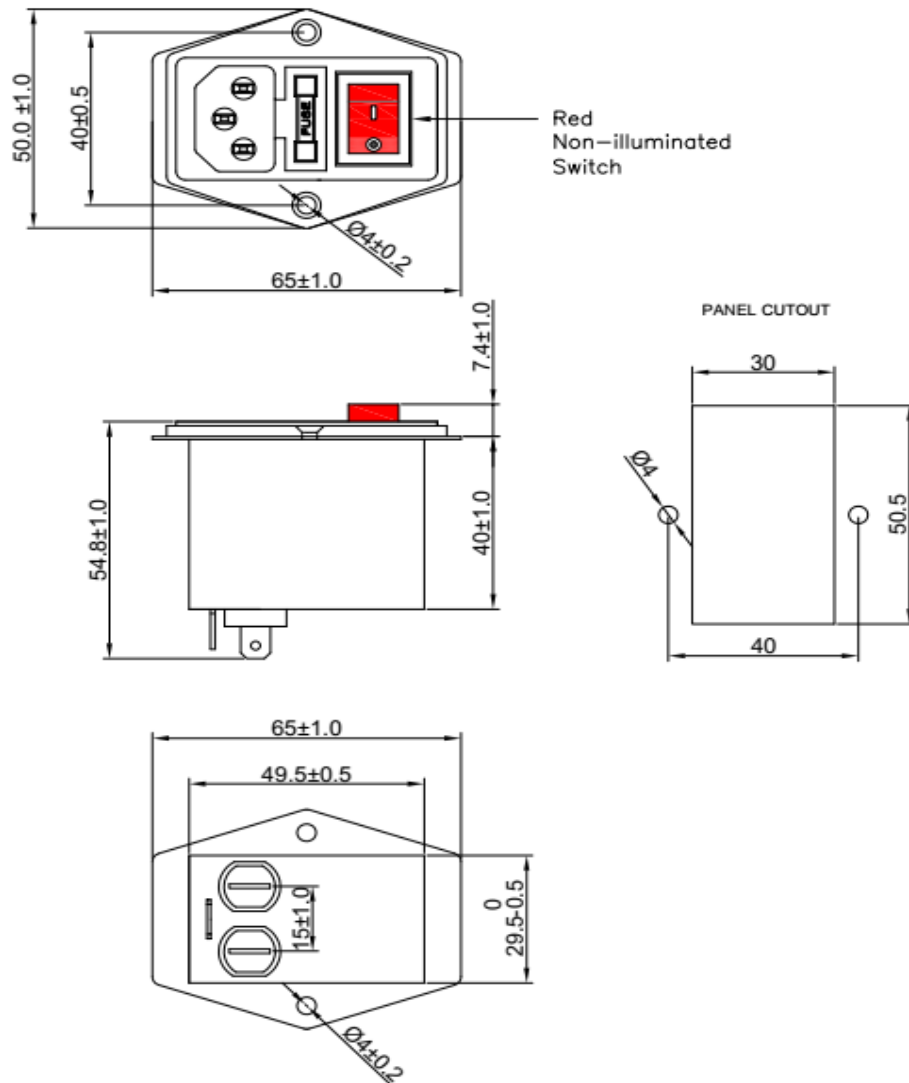


Medical equipment application with surge suppressor -



Mechanical Drawing

Fast-on terminal



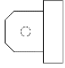
*All dimensions in mm.

Datasheet | EB05

EP-372-F1 Series



Product Selection Table:

| Sr. No. | Elcom part codes (ordering code) | Rated Current rating (A) @40°C | Leakage current (mA) @250V AC | Terminal Fast-on  | Max. Peak current (8/20 μ sec 1 time) (KA) | Energy surge rating (10/1000 μ sec) (Joules) | Approx. weight (gm) | Attenuatio n |
|---------|-------------------------------------|---|---|--|---|---|---------------------------|-----------------|
| 1 | EF-1B001B01E-B05 | 1 | < 0.5 | B | ---- | ---- | 130 | Standard |
| 2 | EF-1B001B02E- B05 | 1 | < 0.5 | B | 6.5 | 175 | 130 | Standard |
| 3 | EF-1B001B03E- B05 | 1 | < 0.003 | B | ---- | ---- | 130 | Standard |
| 4 | EF-1B001B04E- B05 | 1 | < 0.003 | B | 6.5 | 175 | 130 | Standard |
| 5 | EF-1B003B01E- B05 | 3 | < 0.5 | B | ---- | ---- | 130 | Standard |
| 6 | EF-1B003B02E- B05 | 3 | < 0.5 | B | 6.5 | 175 | 130 | Standard |
| 7 | EF-1B003B03E- B05 | 3 | < 0.003 | B | ---- | ---- | 130 | Standard |
| 8 | EF-1B003B04E- B05 | 3 | < 0.003 | B | 6.5 | 175 | 130 | Standard |
| 9 | EF-1B006B01E- B05 | 6 | < 0.5 | B | ---- | ---- | 130 | Standard |
| 10 | EF-1B006B02E- B05 | 6 | < 0.5 | B | 6.5 | 175 | 130 | Standard |
| 11 | EF-1B006B03E- B05 | 6 | < 0.003 | B | ---- | ---- | 130 | Standard |
| 12 | EF-1B006B04E- B05 | 6 | < 0.003 | B | 6.5 | 175 | 130 | Standard |
| 13 | EF-1B010B01E- B05 | 10 | < 0.5 | B | ---- | ---- | 130 | Standard |
| 14 | EF-1B010B02E- B05 | 10 | < 0.5 | B | 6.5 | 175 | 130 | Standard |
| 15 | EF-1B010B03E- B05 | 10 | < 0.003 | B | ---- | ---- | 130 | Standard |
| 16 | EF-1B010B04E- B05 | 10 | < 0.003 | B | 6.5 | 175 | 130 | Standard |

- Maximum leakage under usual AC operating conditions (acc. IEC 60939-3). Note: if the neutral line is interrupted, worst case leakage could reach twice this level.
- Customize products provided on request.

Datasheet | EB05

EP-372-F1 Series



Connection Method

| Current Rating (A) | Fast -on | Earthing |
|--------------------|-------------|-------------|
| 1, 3 & 6 | 6.3 X 0.8mm | 6.3 X 0.8mm |
| 10 | | |

Filter attenuation graph

C = Common mode (asymmetrical) —————
D = Differential mode (symmetrical) - - - - -

For general purpose

