

PRODUCT CODE:-

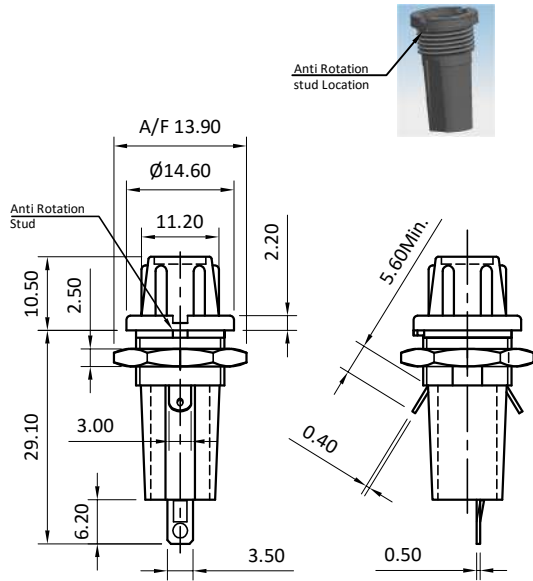
FH-1 SERIES

CATEGORY:-

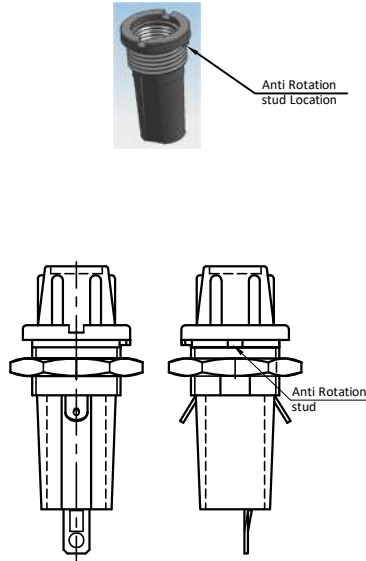
PANEL MOUNTING FUSEHOLDER

BASIC DIMENSIONS

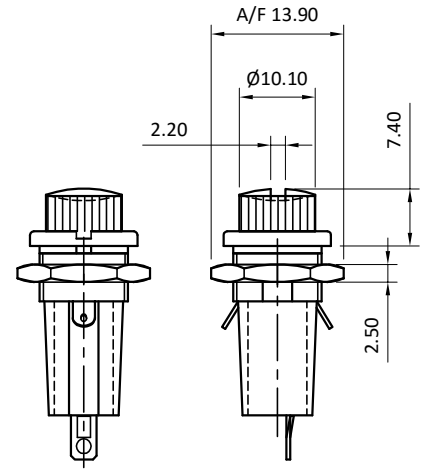
FH-1R Series



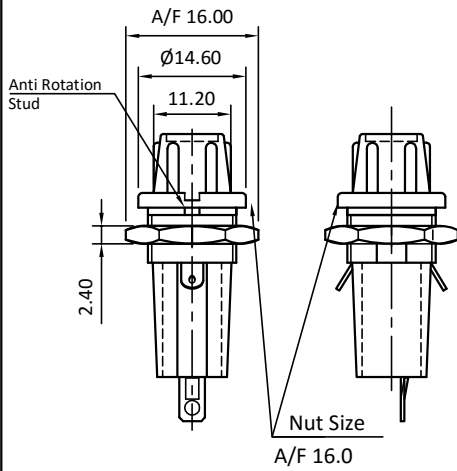
FH-1 Series



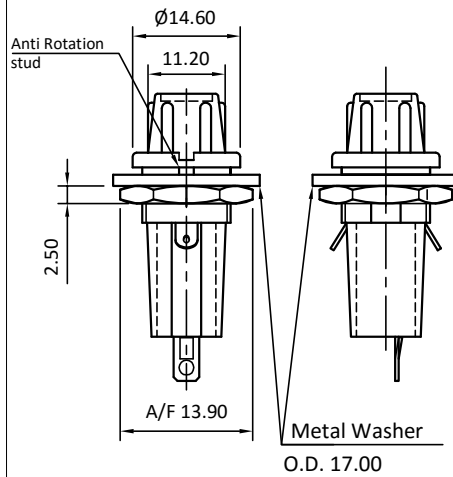
FH-1/D Series



FH-1L

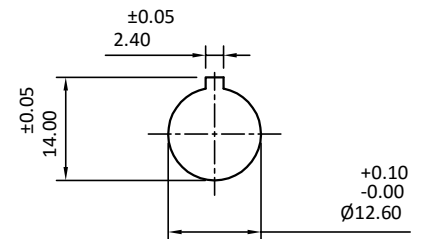


FH-1-MW



PANEL CUTOUT

FH-1/FH-1R Series
FH-1D Series



							APP		SBP	
							CHK			
							DRN	10.10.02	SNV MDT	
REV	IS	WAS	DATE	SIGN	APP.	BY	DATE	SIGN		
UNSP.TOLERANCE			DIMNS. IN	WT(Gm)	SCALE:-		PROJECTION	SHEET	DRAWING NUMBER	
OVER	-	1	10	mm		Max.	NTS.			
UP TO	1	10	-	Moulding, plating details as per Bill of Material					1 OF 2	P F H 0 2 0 0 1
±	0.2	0.3	0.5	Unspecified colour is Black, GF:Glass filled.						
									0	



Plot E-4, Kagal Five Star MIDC, Kagal, Kolhapur, MH - 416236, India

Elcom International Pvt. Ltd.
www.elcom-in.com

F:ENG-08.00

Note: Technical specifications are subject to change without prior notice

Copyright © 2018 by Elcom International Pvt.Ltd, India. All rights reserved

PRODUCT CODE:-

FH-1 SERIES

CATEGORY:-


PANEL MOUNTING FUSEHOLDER

SPECIFICATION TABLE

SR NO.	PARAMETER		SPECIFICATION
1	Type		Panel mounting Fuse holder
2	Panel Thickness		3.0 Max.
3	Fuse link size		Ø5.0 x 20.0
4	V/A Rating		6.3A, 250 V AC
5	CR (Initial)		10 m Ohms Max
6	IR (500 VDC)		1000 M Ohms Min.
7	HVT (1Minute)		2 KV AC
8	Mounting		Panel, Screw-type
9	Terminals		Solder-type
10	Permissible Temp For FH-1Series:	(a)with/without load	-20°C TO +85°C
		(b)for soldering	270°C for 5 Sec. Max.
11	Material	(a)Body	Nylon
		(b)Cap	Nylon
		(c)Terminals	Brass, Tin plating
12	Reference Standard		JSS 52501, IEC-60127

ORDERING CODE

Sr. No	TYPE	CODE	CAP COLOR		APPROVALS
			BLACK	RED	
1.	Screw-in Cap	FH-1/FH-1R	FH-1-03	FH-1-04	CE
			FH-1R-03	FH-1R-04	
2.	Screw-in Cap	FH-1-V/FH-1R-V	FH-1-V-03	FH-1-V-04	CE, RoHS COMPLIANT
			FH-1R-V-03	FH-1R-V-04	
3.	Screw-in with Coin slot cap	FH-1/D	FH-1/D-03	FH-1/D-04	
4.	Screw-in with Coin slot cap	FH-1/D-V	FH-1/D-V-03	FH-1/D-V-04	CE, RoHS COMPLIANT
5.	Screw-in with Coin slot cap,Flame retardant	FH-1/D-DFR	FH-1/D-DFR-03	FH-1/D-DFR-04	CE
6.	Screw-in Cap (A/F 16.00)	FH-1L	FH-1L-03	FH-1L-04	CE
7.	Screw-in Cap with metal washer.	FH-1-MW	FH-1-MW-03	FH-1-MW-04	CE
8.	Screw-in Cap with rubber washer.	FH-1W	FH-1W-03	FH-1W-04	CE
9.	Screw-in Cap with loose rubber washer & nut.	FH-1W-1	FH-1W-1-03	-	CE

						APP		SBP	 Plot E-4, Kagal Five Star MIDC, Kagal, Kolhapur, MH - 416236, India Elcom International Pvt. Ltd. www.elcom-in.com	
						CHK				
						DRN	10.10.02	SNV MDT		
REV	IS	WAS	DATE	SIGN	APP.	BY	DATE	SIGN		
UNSP.TOLERANCE			DIMNS. IN	WT(Gm)	SCALE:-		PROJECTION	SHEET	DRAWING NUMBER	
OVER	-	1	10	mm		Max.	NTS.			
UP TO	1	10	-	Moulding, plating details as per Bill of Material Unspecified colour is Black, GF:Glass filled.						
±	0.2	0.3	0.5					2 OF 2	P F H 0 2 0 0 1	
									REVISION 0	

F:ENG-08.00

Note: Technical specifications are subject to change without prior notice

Copyright © 2018 by Elcom International Pvt.Ltd, India. All rights reserved