

### General Purpose AC EMI Filter



\*Image shown is for illustrative purpose only

### Approvals /Conformance



### Technical Specifications

Operating voltage	120/250 VAC
Current rating	1A-20A
Frequency	50/60Hz
Voltage drop	1 Volt max.
High potential test voltage	P -> E 1500VAC P -> N 1414VDC (applicable for excluding surge suppressor filter)
Insulation resistance	≥ 300 MΩ @ 500VDC (PN→E)
Operating temperature	40°C / -25°C +85°C

### Features and benefits

- | All filters provide high attenuation performance.
- | High reliable
- | All filters compliance to EN60939-3:2015 & EN60939-2:2005 standards
- | Easy and fast chassis mountable filter in deep drawn metal can with compact size.
- | CRCA metal can with nickel plating provides good aesthetic and corrosion protection.
- | Filters available in medical version without capacitor to earth.
- | General purpose filters with low leakage current for safety critical application.
- | With surge suppressor filters also available.
- | Various terminal options are available.

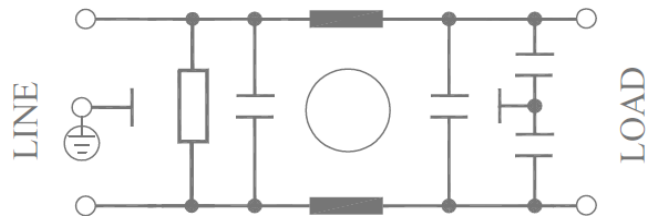
### Application

- | Consumer product
- | Food processing machines
- | Medical equipment
- | Printing machinery
- | Electrical automation equipment

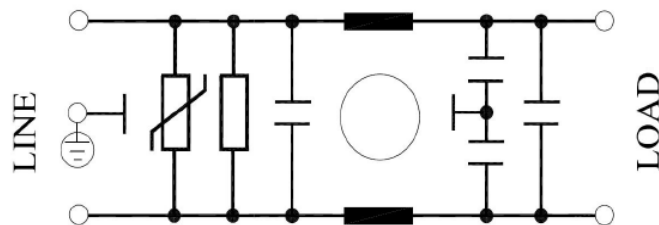
### Attenuation type

- Single Stage Standard

### Electrical schematic for single stage filter: General purpose –

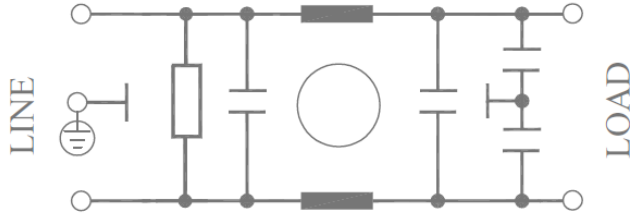


### General purpose with surge suppressor –

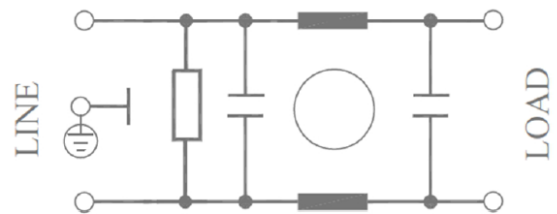


Electrical schematic for filter :

Medical equipment application –

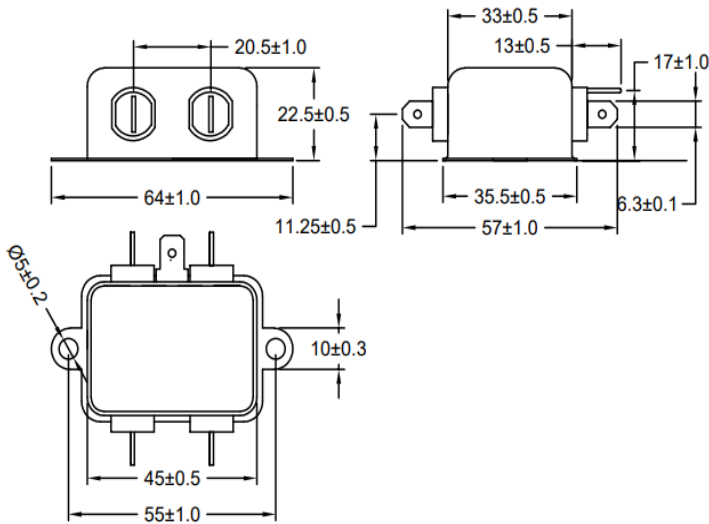


Medical equipment application with surge suppressor -

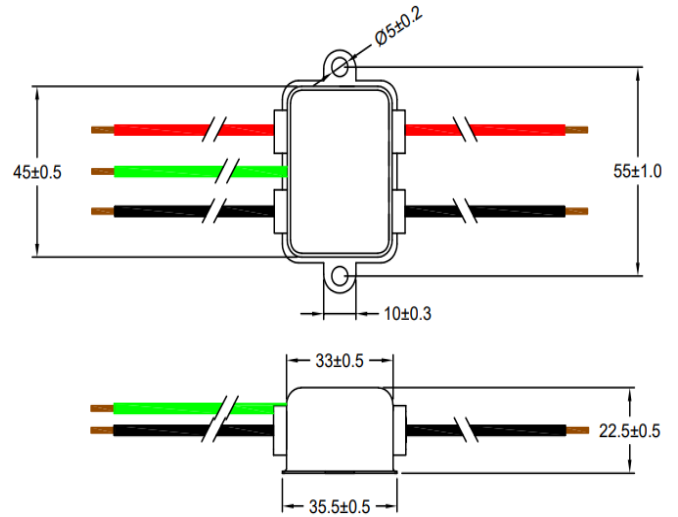


### Mechanical Details

wire lead terminal



touch safe terminal



All dimensions in mm.

### Product Selection Table:

Sr. No	Elcom part codes (ordering code)	Rated Current rating (A) @40°C	Leakage current (mA) @250VAC	Terminals (X)		Max. Peak current (8/20 μ sec 1 time) (KA)	Energy surge rating (10/1000 μ sec) (Joules)	Approx. Weight (gm)	Attenuation
				Fast-on	Wire				
1	EF-1B001X01E-C01	1	< 0.5	B	G	----	----	60	Standard
2	EF-1B001X02E-C01	1	< 0.5	B	G	6.5	175	60	Standard
3	EF-1B001X03E-C01	1	< 0.003	B	G	----	----	60	Standard
4	EF-1B001X04E-C01	1	< 0.003	B	G	6.5	175	60	Standard

5	EF-1B003X01E-C01	3	< 0.5	B	G	----	----	60	Standard
6	EF-1B003X02E-C01	3	< 0.5	B	G	6.5	175	60	Standard
7	EF-1B003X03E-C01	3	< 0.003	B	G	----	----	60	Standard
8	EF-1B003X04E-C01	3	< 0.003	B	G	6.5	175	60	Standard
9	EF-1B006X01E-C01	6	< 0.5	B	G	----	----	60	Standard
10	EF-1B006X02E-C01	6	< 0.5	B	G	6.5	175	60	Standard
11	EF-1B006X03E-C01	6	< 0.003	B	G	----	----	60	Standard
12	EF-1B006X04E-C01	6	< 0.003	B	G	6.5	175	60	Standard
13	EF-1B010X01E-C01	10	< 0.5	B	G	----	----	60	Standard
14	EF-1B010X02E-C01	10	< 0.5	B	G	6.5	175	60	Standard
15	EF-1B010X03E-C01	10	< 0.003	B	G	----	----	60	Standard
16	EF-1B010X04E-C01	10	< 0.003	B	G	6.5	175	60	Standard

- To compile complete part number, replace the 'X' with required I/O connection terminal. (e.g. EF-1B001B03E-C01)
- Maximum leakage under usual AC operating conditions (acc. IEC 60939-3). Note: if the neutral line is interrupted, worst case leakage could reach twice this level.
- Customize products provided on request.

### Connection Method

Current Rating (A)	Fast -on	Wire	Earthing
1, 3 & 6	6.3 X 0.8mm	18AWG	Fast-on/wire leads
10		14AWG	

### Filter attenuation graph

C = Common mode (asymmetrical) —————

D = Differential mode (symmetrical) - - - - -

For general purpose

