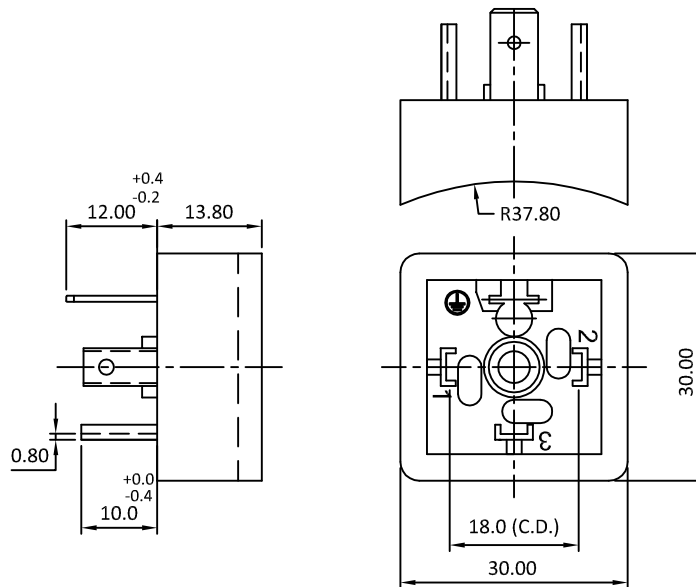


PRODUCT CODE:- ME-2/PC & ME-3/PC
(Non Approved Series)

CATEGORY:- DIN PLUG

BASIC DIMENSIONS:-

Curved Plug




SPECIFICATION TABLE:-

SR.NO.	PARAMETER	SPECIFICATION	
1	Connector Type	Solenoid Connector Style A, Square Type	
2	V/A Rating	10 A 250 VAC	
3	Contact Resistance (Initial)	15 m ohms max.	
4	Insulation Resistance At 100 V DC	100 M ohms min.	
5	H.V.Break Down Test (For 1-Minute)	2 KV AC	
6	Connector Mounting	Screw Mounting	
7	Terminals	Solder Type	
8	Permissible Temp. With/Without Load	-0°C to 90°C	
9	Material.	(a) Body	Nylon-6 GF (Black)
		(b) Rubber Gasket	Nitrile
		(c) Terminals / Contacts	Brass, Tin Plated
		(d) Mounting Screw	M.S , Zinc Plating With Yellow passivation
10	Reference Standard	DIN-43650, ISO 4400, EN-175301-803	

ORDERING CODE:-

Sr. No.	Plug Type	Connection Type	Code	
1	a	Curved Plug	2P + E	ME-2/PC
	b	Curved Plug	3P + E	ME-3/PC

						APP	24.02.06	SBP	 Plot E-4, Kagal Five Star MIDC, Kagal, Kolhapur, MH - 416236, India Elcom International Pvt. Ltd. www.elcom-in.com		
						CHK	24.02.06	YSB			
						DRN	24.02.06	SNV			
REV	IS	WAS	DATE	SIGN	APP.	BY	DATE	SIGN			
UNSP.TOLERANCE			DIMNS. IN	WT(Gm)	SCALE:-		PROJECTION	SHEET	DRAWING NUMBER		
OVER	-	1	10	mm	Max.		NTS.	1 OF 1	P M E 0 2 0 0 2		
UP TO	1	10	-	Moulding, plating details as per Bill of Material							REVISION
±	0.2	0.3	0.5	Unspecified colour is Black, GF:Glass filled.							0

F:ENG-08.00

Note: Technical specifications are subject to change without prior notice

Copyright © 2019 by Elcom International Pvt.Ltd, India. All rights reserved