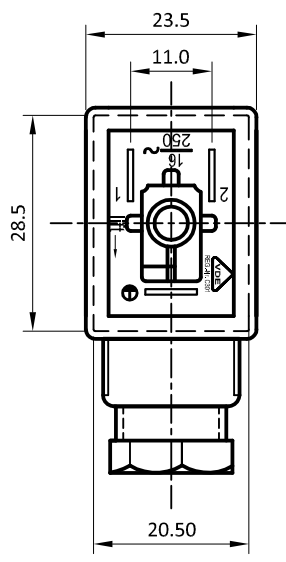
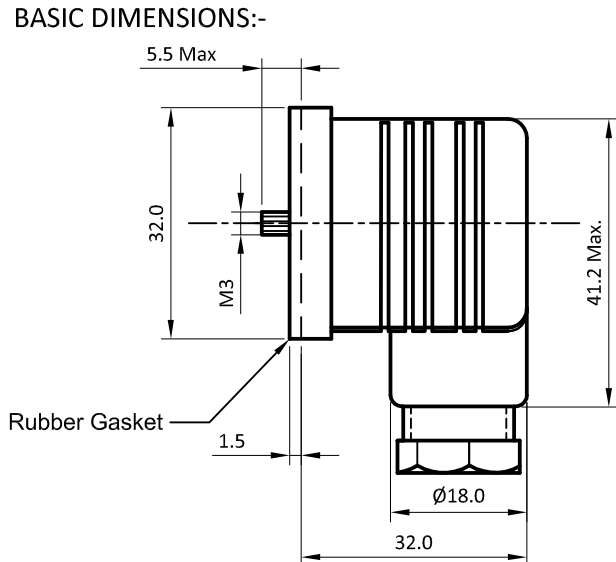


PRODUCT CODE:- MER-209/S-V, MER-209/SL-(X)-V
(Approved Series)

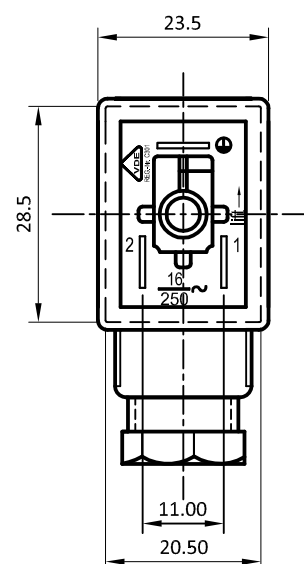
CATEGORY:-

DIN SOCKETS

BASIC DIMENSIONS:-



MER-209/S-V



MER-209/SL-(X)-V

SPECIFICATION TABLE:-


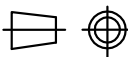
SR.NO.	PARAMETER		SPECIFICATION							
1	Connector Type		Solenoid Connector Style B (Mini Version)							
2	V/A Rating (Non-illuminated)		16A 250 VAC							
3	Voltage Rating (illuminated)		VAC	110	120	230	240			
			VDC	12	24	48	110	220	230	⊗
4	Contact Resistance (Initial)		15 m ohms max.							
5	Insulation Resistance At 100 V DC		100 M ohms min.							
6	H.V.Break Down Test (For 1-Minute)		2 KV AC							
7	Connector Mounting		Screw Mounting							
8	Terminals		Screw Type							
9	Permissible Temp. With/Without Load		-40°C to 120°C							
10	Material.	(a) Body	Non-illuminated-Nylon6, GF-V2 (Black/Grey)							
			illuminated - Polycarbonate (Transparent)							
		(b) Rubber Parts	Silicone							
		(c) Contacts	Brass, Tin plated							
		(d) Terminals (Square Barrel)	Brass, Tin plated							
		(e) Terminals Screw	Brass, Nickel plated							
11	Reference Standard		M.S , Zinc Plating With Trivalent Blue passivation							
			DIN-43650, ISO 4400, EN-175,301-803							
12	Approvals		VDS							

ORDERING CODE:-

Sr. No.	Gland Size	Connection Type	Code	
			Non-illuminated	illuminated [⊗]
1	PG-9	2P + E	MER-209/S-V	MER-209/SL-(X)-V

⊗ : For illuminated range, add respective voltage at location "X" in the ordering code

For Example : MER-209/SL-(24VDC)-V (for 24V as per Sr.No. 1)

						APP	20.11.13	GJG	<div><div>Plot E-4, Kagal Five Star MIDC, Kagal, Kolhapur, MH - 416236, India</div><div>Elcom International Pvt. Ltd.</div><div>www.elcom-in.com</div></div>									
						CHK	20.11.13	YSB										
						DRN	20.11.13	PGP										
REV	IS	WAS	DATE	SIGN	APP.	BY	DATE	SIGN										
UNSP.TOLERANCE		DIMNS. IN		WT(Gm)		SCALE:-		PROJECTION	SHEET	DRAWING NUMBER								
OVER	-	1	10	mm	Max.		NTS.		1 OF 1	P	M	E	R	2	2	0	V	REVISION
UP TO	1	10	-	Moulding, plating details as per Bill of Material Unspecified colour is Black, GF:Glass filled.						0								
±	0.2	0.3	0.5															