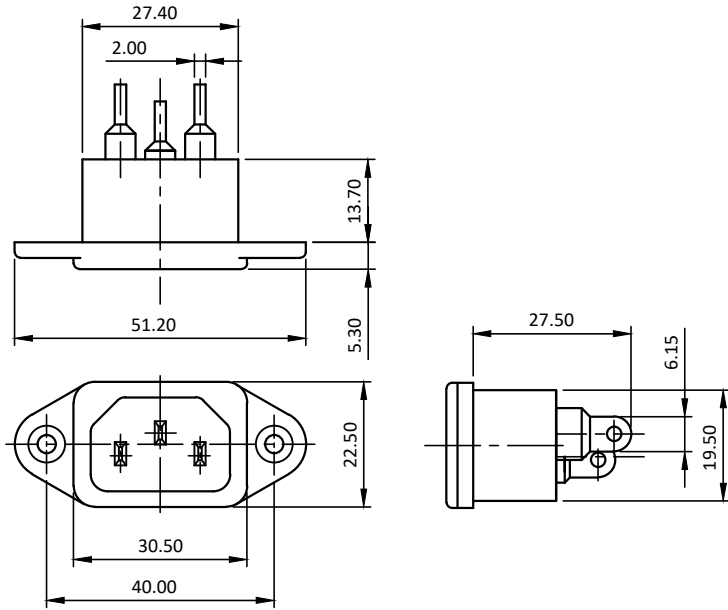


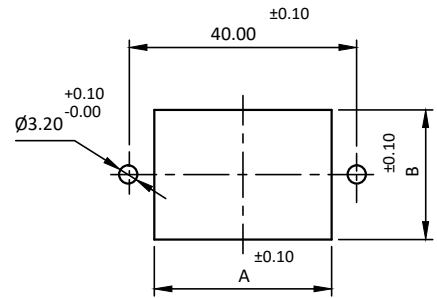
PRODUCT CODE:- **EMI-24-X (Series)**

CATEGORY:- **IEC INLET**

BASIC DIMENSIONS:-



PANEL CUTOUT:-



PANEL CUTOUT	A	B
REAR MOUNTING	31.20	23.20
FRONT MOUNTING	28.00	20.00

SPECIFICATION TABLE:-

SR.NO.	PARAMETER		RAMARKS
1	V/A Rating		10A 250V AC 15A 250V AC
2	Contact resistance (Initial)		10 mohms max.
3	Insulation resistance at 500 V DC		1000 Mohms min.
4	H.V.Break down test (For 1minute)		2 KV AC
5	Panel thickness (Max.)		--
6	Mounting		Panel, Screw-type
7	Terminals		Solder-type
8	Permissible temp.	(a)With/Without load	0°C To 70°C 0°C To 65°C *
		(b)For Soldering	270°C for 5 Sec. max.
9	Material	(a)Body	Nylon-6, GF20%, V-2
		(b)Contacts, Terminals	Brass, Tin plating
10	Reference standard		IEC 60320-1, IEC 60320-3, UL-498, CSA : C22.2 No.182.3
11	Compliance Marking		
12	Approval		

* : Also available for temp. rating up to 125°C on request (For UL only)

APP	18.05.06	SBP	Plot E-4, Kagal Five Star MIDC, Kagal, Kolhapur, MH - 416236, India Elcom International Pvt. Ltd. www.elcom-in.com					
CHK	18.05.06	SNV						
DRN	18.05.06	SNV						
REV	IS	WAS	DATE	SIGN	APP.	BY	DATE	SIGN
UNSP.TOLERANCE			DIMNS. IN	WT(Gm)	SCALE:-	PROJECTION	SHEET	DRAWING NUMBER
OVER	-	1	10	mm	Max.	NTS.	1 OF 1	P E M I 2 0 2 4
UP TO	1	10	-	Moulding, plating details as per Bill of Material				REVISION
±	0.2	0.3	0.5	Unspecified colour is Black, GF:Glass filled.				0

F:ENG-08.00

Note: Technical specifications are subject to change without prior notice

Copyright © 2019 by Elcom International Pvt.Ltd, India. All rights reserved