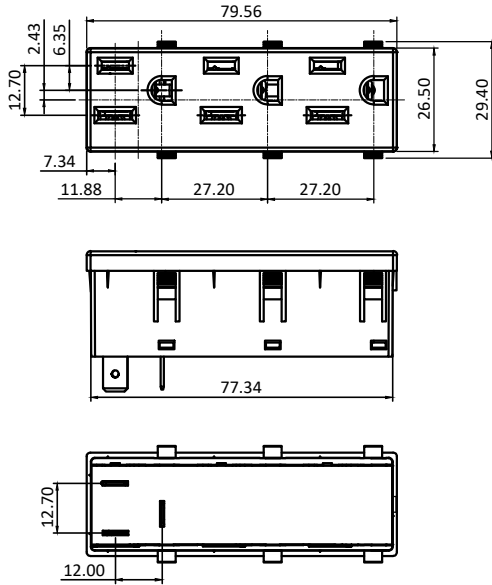


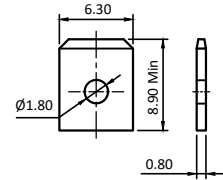
PRODUCT CODE:- **ENO-0515-33-X**

CATEGORY:- **NEMA SOCKET**

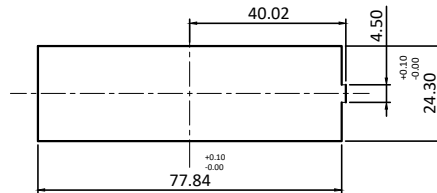
BASIC DIMENSIONS:



TERMINAL DETAILS:



PANEL CUTOUT



SPECIFICATION TABLE:

SR.NO.	PARAMETER	SPECIFICATION	
1	Connector Type	5-15R Type	
2	V/A Rating	125 VAC, 15 A	
3	Contact Resistance (Initial)	10 mohms max.	
4	Insulation Resistance At 500 V DC	100 Mohms min.	
5	H.V.Break Down Test (For 1-Minute)	2 KVAC	
6	Mounting	Panel, Snap mounting	
7	Panel Thickness	1.00-2.00mm	
8	Terminals	6.30 x 0.80	
9	Withdrawal force in kg	1.3 to 6.7 kg.	
10	Permissible Temp.	(a) With/Without Load	0°C TO 65°C *
		(b) For Soldering	270°C for 5sec. max.
11	Material	(a) Body, Cover	Nylon-6, UL-94 V-0
		(b) Contacts, Terminals	Brass ,Tin Plating
12	Reference Standard	UL-498, UL-486E, NEMA WD 6:2002, CSA C22.2 NO. 42-99.	
13	Approvals		

* : Also available for temp. rating up to 125°C on request (For UL only)

APP	30.04.15	GJG	 Plot E-4, Kagal Five Star MIDC, Kagal, Kolhapur, MH - 416236, India Elcom International Pvt. Ltd. www.elcom-in.com									
CHK	30.04.15	PGP										
DRN	30.04.15	Vicky										
REV	IS	WAS	DATE	SIGN	APP.	BY	DATE	SIGN				
UNSP.TOLERANCE		DIMNS. IN	WT(Gm)	SCALE:-	PROJECTION	SHEET	DRAWING NUMBER					
OVER	-	1	10	mm	Max.	NTS.		1 OF 1	P E N O 2 5 5 3 3			REVISION
UP TO	1	10	-	Moulding, plating details as per Bill of Material Unspecified colour is Black, GF:Glass filled.					0			
±	0.2	0.3	0.5									

F:ENG-08.00

Note: Technical specifications are subject to change without prior notice

Copyright © 2019 by Elcom International Pvt.Ltd, India. All rights reserved