

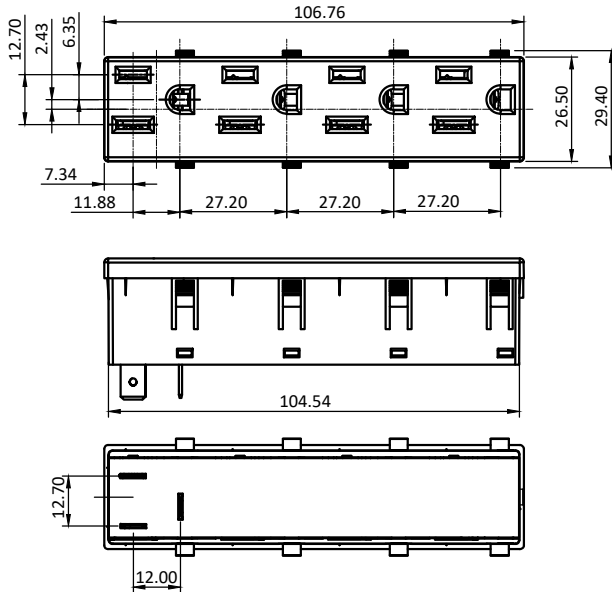
PRODUCT CODE:-

ENO-0515-43-X

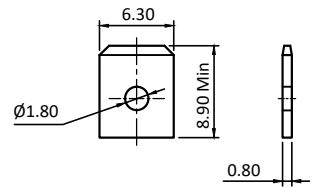
CATEGORY:-

NEMA SOCKET

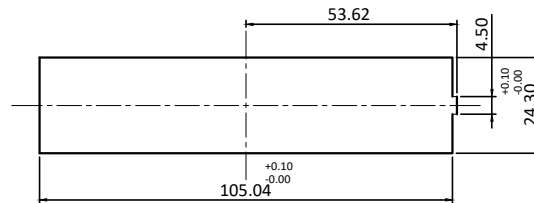
BASIC DIMENSIONS:



TERMINAL DETAILS:



PANEL CUTOUT



SPECIFICATION TABLE:

SR.NO.	PARAMETER		SPECIFICATION
1	Connector Type		5-15R Type
2	V/A Rating		125 VAC, 15 A
3	Contact Resistance (Initial)		10 mohms max.
4	Insulation Resistance At 500 V DC		100 Mohms min.
5	H.V.Break Down Test (For 1-Minute)		2 KVAC
6	Mounting		Panel, Snap mounting
7	Panel Thickness		1.00-2.00mm
8	Terminals		6.30 x 0.80
9	Withdrawal force in kg		1.3 to 6.7 kg.
10	Permissible Temp.	(a) With/Without Load	0°C TO 65°C
		(b) For Soldering	270°C for 5sec. max.
11	Material	(a) Body, Cover	Nylon-6, UL-94 V-0
		(b) Contacts, Terminals	Brass ,Tin Plating
12	Reference Standard		UL-498, UL-486E, NEMA WD 6:2002, CSA C22.2 NO. 42-99.
13	Approvals		

⊗ : Also available for temp. rating up to 125°C on request (For UL only)

APP	30.04.15	GJG	 Plot E-4, Kagal Five Star MIDC, Kagal, Kolhapur, MH - 416236, India Elcom International Pvt. Ltd. www.elcom-in.com													
CHK	30.04.15	PGP														
DRN	30.04.15	Vicky														
REV	IS	WAS		DATE	SIGN	APP.	BY	DATE	SIGN							
UNSP.TOLERANCE		DIMNS. IN mm	WT(Gm) Max.	SCALE:- NTS.	PROJECTION	SHEET	DRAWING NUMBER									
OVER	- 1 10					1 OF 1	P	E	N	O	2	5	5	4	3	REVISION
UP TO	± 0.2 0.3 0.5	Moulding, plating details as per Bill of Material Unspecified colour is Black, GF:Glass filled.														

F:ENG-08.00

Note: Technical specifications are subject to change without prior notice

Copyright © 2019 by Elcom International Pvt.Ltd, India. All rights reserved