

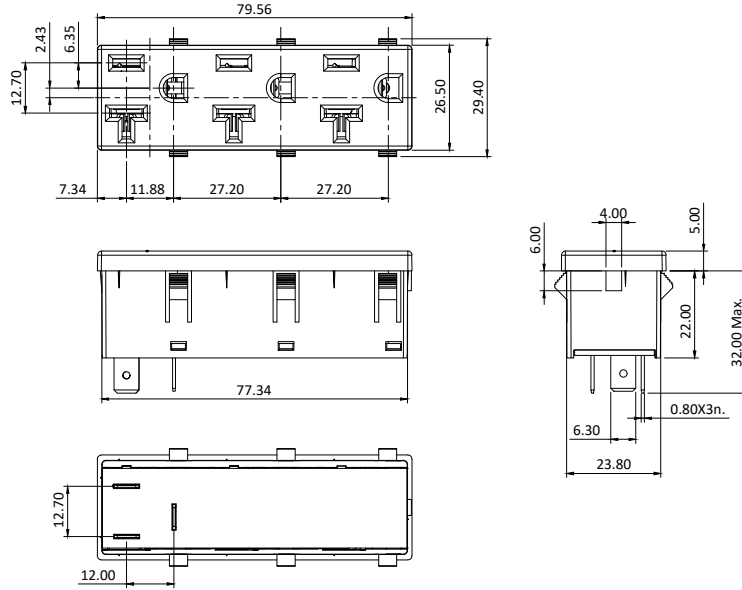
PRODUCT CODE:-

ENO-0520-33-X

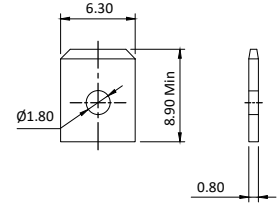
CATEGORY:-

NEMA SOCKET

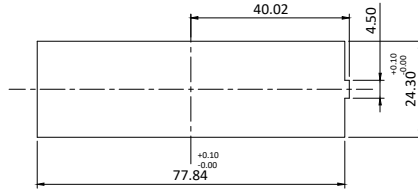
BASIC DIMENSIONS:-





TERMINAL DETAILS:




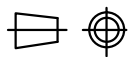
PANEL CUTOUT:-



SPECIFICATION TABLE:-

SR.NO.	PARAMETER		SPECIFICATION
1	Connector Type		5-20R Type
2	V/A Rating		125 VAC, 20 A
3	Contact Resistance (Initial)		10 mohms max.
4	Insulation Resistance At 500 V DC		100 Mohms min.
5	H.V.Break Down Test (For 1-Minute)		2 KVAC
6	Mounting		Panel, Snap mounting
7	Panel Thickness		1.00-2.00mm
8	Terminals		6.30 x 0.80
9	Withdrawal force in kg		1.3 to 6.7 kg.
10	Permissible Temp.	(a) With/Without Load	0°C TO 65°C  *
		(b) For Soldering	270°C for 5sec. max.
11	Material	(a) Body, Cover	Nylon-6, UL-94 V-0
		(b) Contacts, Terminals	Brass ,Tin Plating
12	Reference Standard		UL-498, UL-486E, NEMA WD 6:2002, CSA C22.2 NO. 42-99.
13	Approvals		

* : Also available for temp. rating up to 125°C on request (For UL only)

						APP	30.04.15	GJG	 Plot E-4, Kagal Five Star MIDC, Kagal, Kolhapur, MH - 416236, India Elcom International Pvt. Ltd. www.elcom-in.com
						CHK	30.04.15	PGP	
						DRN	30.04.15	PPD	
REV	IS	WAS	DATE	SIGN	APP.	BY	DATE	SIGN	
UNSP.TOLERANCE		DIMNS. IN	WT(Gm)	SCALE:-	PROJECTION	SHEET	DRAWING NUMBER		
OVER	-	1	10	mm	Max.	NTS.		1 OF 1	P E N O 2 1 1 1 3
UP TO	±	0.2	0.3	0.5	Moulding, plating details as per Bill of Material Unspecified colour is Black, GF:Glass filled.				REVISION
									0

F:ENG-08.00

Note: Technical specifications are subject to change without prior notice

Copyright © 2019 by Elcom International Pvt.Ltd, India. All rights reserved