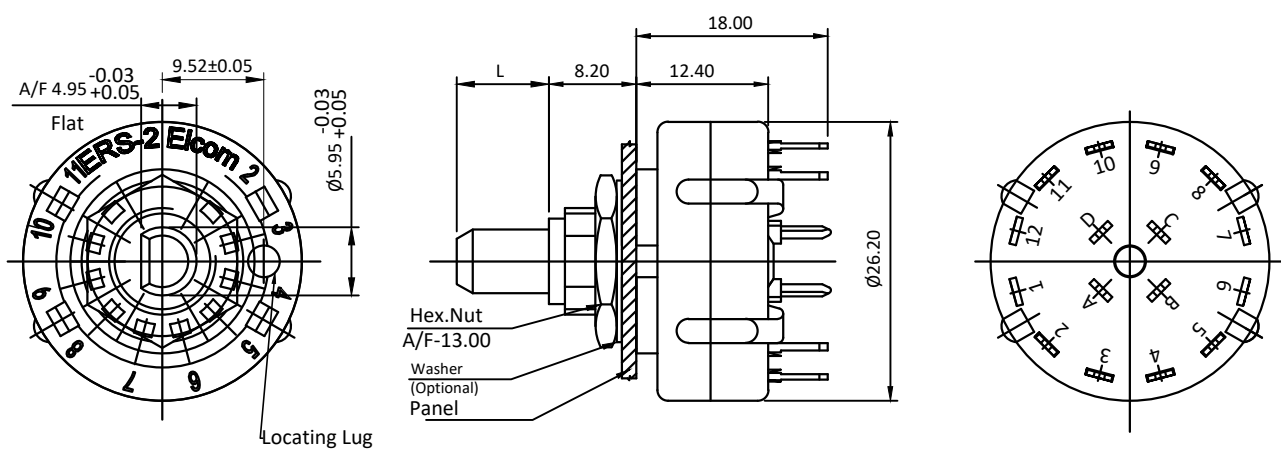

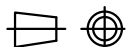


PRODUCT CODE:- **ERS-2 Series**

CATEGORY:- **Rotary switch**

BASIC DIMENSIONS:-



| | | | | | | | | | |
|----------------|-----|-----|-----------|--|---------|------------|---|-----------------|--|
| | | | | | | APP | 16.06.06 | PBM |  <p>Plot E-4, Kagal Five Star MIDC, Kagal, Kolhapur, MH - 416236, India Elcom International Pvt. Ltd. www.elcom-in.com</p> |
| | | | | | | CHK | 16.06.06 | | |
| | | | | | | DRN | 16.06.06 | SNV | |
| REV | IS | WAS | DATE | SIGN | APP. | BY | DATE | SIGN | |
| UNSP.TOLERANCE | | | DIMNS. IN | WT(Gm) | SCALE:- | PROJECTION | SHEET | DRAWING NUMBER | |
| OVER | - | 1 | 10 | mm | Max. | NTS. | 1 OF 4 | P E R S 2 0 0 2 | |
| UP TO | 1 | 10 | - | Moulding, plating details as per Bill of Material Unspecified colour is Black, GF:Glass filled. | | |  | REVISION | |
| ± | 0.2 | 0.3 | 0.5 | | | | | 0 | |

F:ENG-08.00

Note: Technical specifications are subject to change without prior notice

Copyright © 2019 by Elcom International Pvt.Ltd, India. All rights reserved

PRODUCT CODE:-

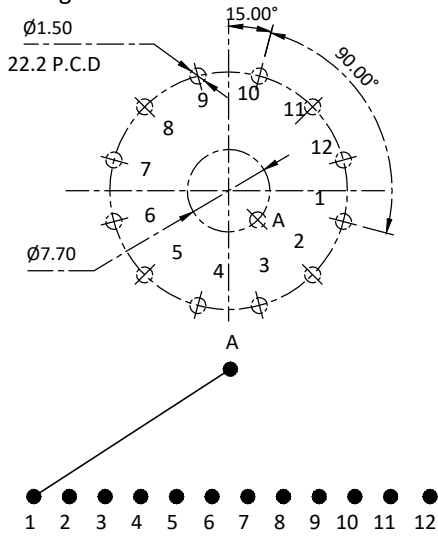
ERS-2 Series

CATEGORY:-

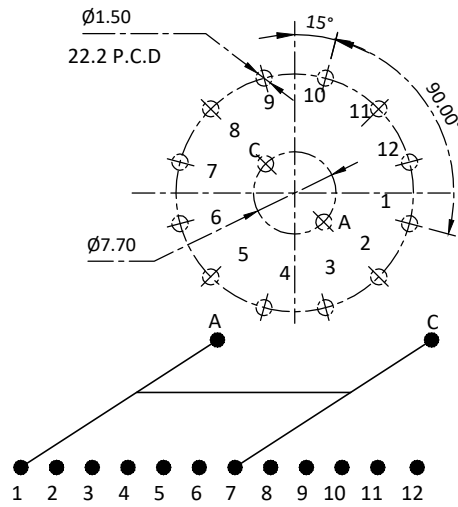
Rotary switch

BASIC DIMENSIONS:-

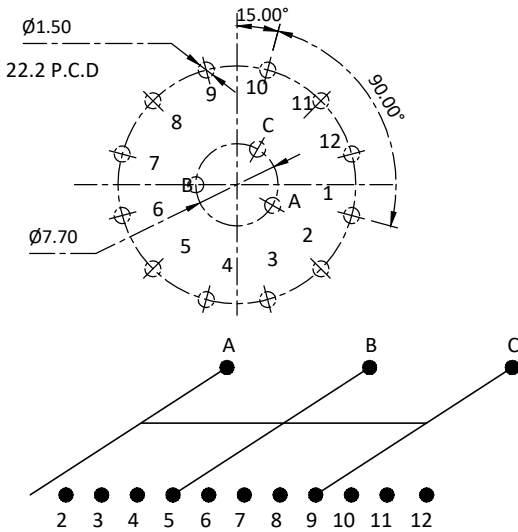
P.C.B. Mounting Details



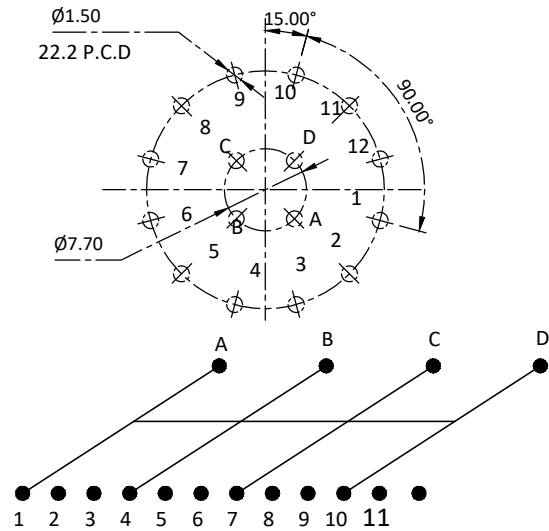
1 Pole Module



2 Pole Module

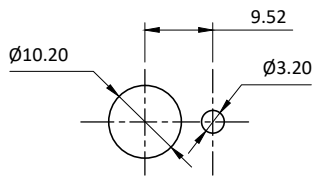


3 Pole Module

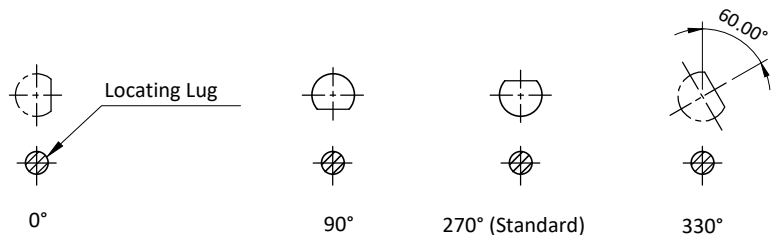


4 Pole Module

Panel Cutout



Actuator (A/F) Orientation



| | | | | | | | | | | | | | | | | | |
|----------------|----------|-----|--|---|---------|------|------------|--------|----------------|---|---|---|---|---|---|---|----------|
| APP | 16.06.06 | PBM | <p>Plot E-4, Kagal Five Star MIDC, Kagal, Kolhapur, MH - 416236, India</p> <p>Elcom International Pvt. Ltd.</p> <p>www.elcom-in.com</p> | | | | | | | | | | | | | | |
| CHK | 16.06.06 | | | | | | | | | | | | | | | | |
| DRN | 16.06.06 | SNV | | | | | | | | | | | | | | | |
| REV | IS | WAS | | DATE | SIGN | APP. | BY | DATE | SIGN | | | | | | | | |
| UNSP.TOLERANCE | | | DIMNS. IN | WT(Gm) | SCALE:- | | PROJECTION | SHEET | DRAWING NUMBER | | | | | | | | |
| OVER | - | 1 | 10 | mm | Max. | NTS. | | 2 OF 4 | P | E | R | S | 2 | 0 | 0 | 2 | REVISION |
| UP TO | 1 | 10 | - | Moulding, plating details as per Bill of Material Unspecified colour is Black, GF:Glass filled. | | | | | 0 | | | | | | | | |
| ± | 0.2 | 0.3 | 0.5 | | | | | | | | | | | | | | |

F:ENG-08.00

Note: Technical specifications are subject to change without prior notice

Copyright © 2019 by Elcom International Pvt.Ltd, India. All rights reserved


PRODUCT CODE:-


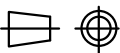
ERS-2 Series

CATEGORY:-

Rotary switch

SPECIFICATION TABLE:-

| SR.NO | PARAMETER | | SPECIFICATION |
|-------|-----------------------------------|---------------------------|--|
| 1 | Type And Function | | Rotary Switch |
| 2 | V/A Rating | | 150mA 250 V AC. |
| 3 | Panel Thickness | | 3.0 Max. |
| 4 | Contact Resistance(Initial) | | 20 m ohms Max. |
| 5 | Insulation Resistance at 500 V DC | | 1000 M ohms Min. |
| 6 | H.V.Break Down Test(For 1-Minute) | | 1.5 KV AC |
| 7 | Mounting | | Panel With Nut |
| 8 | Terminals | | Solder-type |
| 9 | Breaking Torque | | 6kg-cm Min |
| 10 | Electrical Life | | 10,000 Cycles Min/Pole |
| 11 | Permissible Temp | (a)With/Without Load | -25°C TO +85°C |
| | | (b)For Soldering | 270°C, 5 Sec Max |
| 12 | Material | (a)Rotar Housing | Nylon, GF |
| | | (b)Conact Housing | Nylon, GF |
| | | (c)Rotar | Nylon,GF |
| | | (d)Current Carrying Parts | |
| | | i)Contacts | Copper Alloy,Silver Plating |
| | | ii)Terminals | Copper Alloy,Tin Plating |
| 13 | Reference Standard | | IEC-61058-1, UL-1054 |
| 14 | Compliance Marking | |  (On Request) |

| | | | | | | | | | |
|----------------|-----|-----|-----------|--|---------|------------|---|-----------------|---|
| | | | | | | APP | 16.06.06 | PBM |  Plot E-4, Kagal Five Star MIDC, Kagal, Kolhapur, MH - 416236, India Elcom International Pvt. Ltd. www.elcom-in.com |
| | | | | | | CHK | 16.06.06 | | |
| | | | | | | DRN | 16.06.06 | SNV | |
| REV | IS | WAS | DATE | SIGN | APP. | BY | DATE | SIGN | |
| UNSP.TOLERANCE | | | DIMNS. IN | WT(Gm) | SCALE:- | PROJECTION | SHEET | DRAWING NUMBER | |
| OVER | - | 1 | 10 | mm | Max. | NTS. |  3 OF 4 | P E R S 2 0 0 2 | REVISION |
| UP TO | 1 | 10 | - | Moulding, plating details as per Bill of Material Unspecified colour is Black, GF:Glass filled. | | | | | 0 |
| ± | 0.2 | 0.3 | 0.5 | | | | | | 0 |

F:ENG-08.00

Note: Technical specifications are subject to change without prior notice

Copyright © 2019 by Elcom International Pvt.Ltd, India. All rights reserved

| | |
|---------------------------------------|------------------------------------|
| PRODUCT CODE:- ERS-2 Series | CATEGORY:- Rotary switch |
|---------------------------------------|------------------------------------|

Ordering code:-

MODEL NO.

ERS-

| | | | | |
|---|--|--|--|--|
| 2 | | | | |
|---|--|--|--|--|

 -

| | |
|--|--|
| | |
|--|--|

↓ Shaft

↖ Indexing/Rotating type

Switch model:-

ERS-

| | | | | |
|---|--|--|--|--|
| 2 | | | | |
|---|--|--|--|--|

 -

| | |
|--|--|
| | |
|--|--|

| SR.NO | SWITCH CODE | SWITCH CONFIGURATION | | | |
|-------|----------------------|----------------------|-----|---|------------|
| | | POLE - | WAY | | POLE - WAY |
| 1 | ERS-2102 to ERS-2112 | 1 | — | 2 | TO 1 — 12 |
| 2 | ERS-2202 to ERS-2206 | 2 | — | 2 | TO 2 — 6 |
| 3 | ERS-2302 to ERS-2304 | 3 | — | 2 | TO 3 — 4 |
| 4 | ERS-2402 to ERS-2403 | 4 | — | 2 | TO 4 — 3 |

Shaft Details:-

* ERS-

| | | | | |
|---|--|--|--|--|
| 2 | | | | |
|---|--|--|--|--|

 - *

| | |
|--|--|
| | |
|--|--|

| SR. NO. | CODE | A | B | C | D | E | F | G |
|---------|------------------------------------|------|------|------|------|------|------|------|
| 1 | L | 9.0 | 30.0 | 24.0 | 12.0 | 7.50 | 6.50 | 5.00 |
| 2 | Cross section | | | | | | | |
| 3 | A/F Orientation (Standard 270°) | Std. | Std. | Std. | -- | Std. | Std. | Std. |

Indexing/rotation Code Details:-

ERS-

| | | | | |
|---|--|--|--|--|
| 2 | | | | |
|---|--|--|--|--|

 -

| | |
|--|--|
| | |
|--|--|

 #

| Shorting type | Index angle | Rotation angle | Code |
|------------------|-------------|----------------|------|
| N (Non short) | 30 | <360 | N |
| | 30 | 360 | N1 |
| | 60 | 360 | N3 |
| S (short) | 30 | <360 | S |
| | 30 | 360 | S1 |
| | 60 | 360 | S3 |

Example:-
ERS-2102-AN

| | | | | | | | | | |
|----------------|-----|-----|-----------|---|---------|------------|----------|----------------|--|
| | | | | | | APP | 16.06.06 | PBM | Plot E-4, Kagal Five Star MIDC, Kagal, Kolhapur, MH - 416236, India Elcom International Pvt. Ltd. www.elcom-in.com |
| | | | | | | CHK | 16.06.06 | | |
| | | | | | | DRN | 16.06.06 | SNV | |
| REV | IS | WAS | DATE | SIGN | APP. | BY | DATE | SIGN | |
| UNSP.TOLERANCE | | | DIMNS. IN | WT(Gm) | SCALE:- | PROJECTION | SHEET | DRAWING NUMBER | |
| OVER | - | 1 | 10 | mm | Max. | NTS. | 4 | OF 4 | P E R S 2 0 0 2 |
| UP TO | 1 | 10 | - | Moulding, plating details as per Bill of Material | | | | | REVISION |
| ± | 0.2 | 0.3 | 0.5 | Unspecified colour is Black, GF:Glass filled. | | | | | 0 |

F:ENG-08.00

Note: Technical specifications are subject to change without prior notice

Copyright © 2019 by Elcom International Pvt.Ltd, India. All rights reserved