

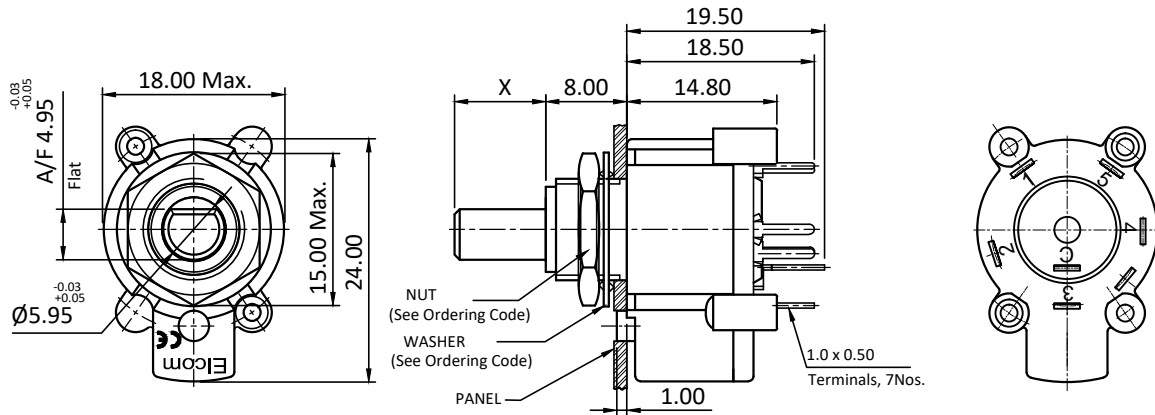
PRODUCT CODE:-

ERS-45 Series

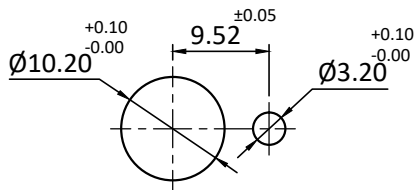
CATEGORY:-

Rotary switch

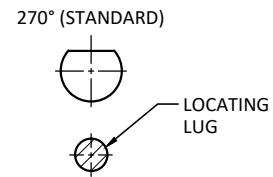
BASIC DIMENSIONS:-



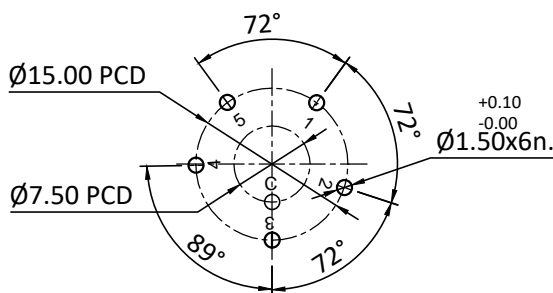
PANEL CUTOUT:-



ACTUATOR ORIENTATION (A/F)



P.C.B. LAYOUT



CONNECTION DIAGRAM

	● KNOB POSITION				
	1	2	3	4	5
CONNECTION	C → 1	C → 2	C → 3	C ↗ 3 ↘ 4	C → 5

APP	02.10.04	SBP	<p>Plot E-4, Kagal Five Star MIDC, Kagal, Kolhapur, MH - 416236, India</p> <p>Elcom International Pvt. Ltd.</p> <p>www.elcom-in.com</p>							
CHK										
DRN	02.10.04	SNV								
REV	IS	WAS	DATE	SIGN	APP.	BY	DATE	SIGN		
UNSP.TOLERANCE		DIMNS. IN	WT(Gm)	SCALE:-	PROJECTION	SHEET	DRAWING NUMBER			
OVER	-	1	10	mm	Max.	NTS.		1 OF 2	P E R S 2 0 0 4	REVISION
UP TO	1	10	-	Moulding, plating details as per Bill of Material Unspecified colour is Black, GF:Glass filled.						0
±	0.2	0.3	0.5							


F:ENG-08.00

Note: Technical specifications are subject to change without prior notice

Copyright © 2019 by Elcom International Pvt.Ltd, India. All rights reserved

PRODUCT CODE:-	ERS-45 Series	CATEGORY:-	Rotary switch
----------------	----------------------	------------	----------------------

SPECIFICATION TABLE:-

SR.NO	PARAMETER		SPECIFICATION
1	Type And Function		Rotary Switch, 1 Pole, 5 Way
2	V/A Rating		1A 250V AC
3	Panel Thickness		3.0 Max.
4	Contact Resistance(Initial)		20 m Ohms Max.
5	Insulation Resistance at 500 V DC		1000 M Ohms Min.
6	H.V.Break Down Test(For 1-Minute)		1.0 KV AC
7	Mounting		Panel With Nut
8	Terminals		Solder-type
9	Electrical Life		10,000 Cycles Min.
10	Operating Torque		0.4 To 0.7 Kg-cm
11	Mounting Torque		7.0 Kg-cm Min.
12	Permissible Temp.	(a) With/Without Load	-25°C TO +85°C
		(b) For Soldering	270°C, 5 Sec Max.
13	Material	(a) Rotor & Contact Housing	Nylon GF
		(c) Rotor	Delrin, Black
		(d) Terminals & Contacts	Brass, Silver Plating
14	Reference Standard		IEC-61058-1, UL-1054
15	Compliance Marking		 (On Request)

ORDERING CODE:-


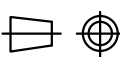
Series	Type	Shaft Length (X)	
ERS	45	A	5.00
		B	9.00

SR.NO	CODE	MOUNTING ACCESSORIES
1	ERS-45A	Octagonal Nut With Washer
2	ERS-45A-1	Hexagonal. Nut Without Washer
3	ERS-45B	Octagonal Nut With Washer

For Example:-

ERS-45A

ERS-45A-1

						APP	02.10.04	SBP	 Plot E-4, Kagal Five Star MIDC, Kagal, Kolhapur, MH - 416236, India Elcom International Pvt. Ltd. www.elcom-in.com	
						CHK				
						DRN	02.10.04	SNV		
REV	IS	WAS	DATE	SIGN	APP.	BY	DATE	SIGN		
UNSP.TOLERANCE			DIMNS. IN	WT(Gm)	SCALE:-	PROJECTION	SHEET	DRAWING NUMBER		
OVER	-	1	10	mm	Max.	NTS.		2 OF 2	P E R S 2 0 0 4	REVISION
UP TO	1	10	-	Moulding, plating details as per Bill of Material Unspecified colour is Black, GF:Glass filled.						0
±	0.2	0.3	0.5							

F:ENG-08.00

Note: Technical specifications are subject to change without prior notice

Copyright © 2019 by Elcom International Pvt.Ltd, India. All rights reserved