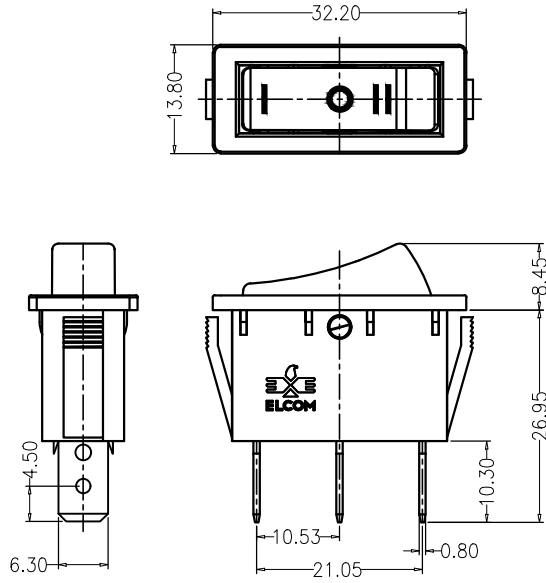


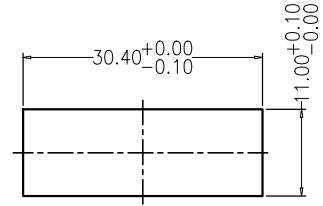
PRODUCT CODE:- **SS-62CF/162CF Series**

CATEGORY:- **Rocker Switch**

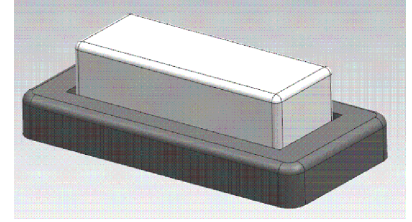
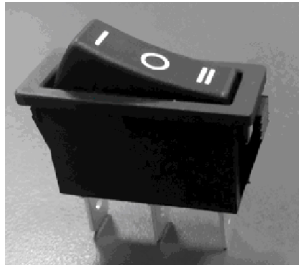
Basic Dimension



Panel cutout



Note-Pictures are for reference Purpose only, Original Product May Differ.

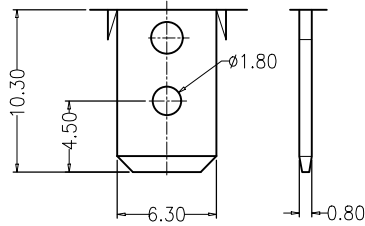


Code:RS-DC-02

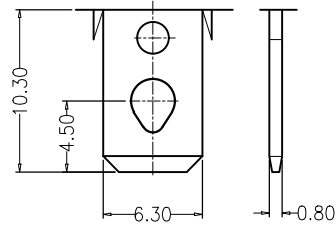
ON-OFF-ON

Dust Cap On-Request

T5C


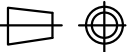


T5B



Standard

On-Request

| | | | | | | | | | |
|----------------|-----|-----|-----------|---|---------|------|---|--------|---|
| | | | | | | APP | 09.11.19 | GJG |  Plot E-4, Kagal Five Star MIDC, Kagal, Kolhapur, MH - 416236, India Elcom International Pvt. Ltd. www.elcom-in.com |
| | | | | | | CHK | | | |
| | | | | | | DRN | 09.11.19 | MDT | |
| REV | IS | WAS | DATE | SIGN | APP. | BY | DATE | SIGN | |
| UNSP.TOLERANCE | | | DIMNS. IN | WT(Gm) | SCALE:- | | PROJECTION | SHEET | DRAWING NUMBER |
| OVER | - | 1 | 10 | mm | Max. | NTS. |  | 1 OF 2 | REVISION |
| UP TO | 1 | 10 | - | Moulding, plating details as per Bill of Material Unspecified colour is Black, GF:Glass filled. | | | | | |
| ± | 0.2 | 0.3 | 0.5 | | | | | | |

F:ENG-08.00

Copyright © 2022 by Elcom International Pvt.Ltd, India. All rights reserved

Note: Technical specifications are subject to change without prior notice


PRODUCT CODE:-

SS-62CF/162CF Series

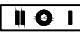
CATEGORY:-

Rocker Switch

Specification Table


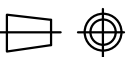
| SR.NO | PARAMETER | | SPECIFICATION |
|-------|------------------------------------|----------------------|--|
| 1 | Type | | Rocker switch,SPDT(Center off) |
| 2 | Panel Thickness | | 3.0 Max. |
| 3 | V/A Rating | | 6A,16A 250Vac |
| 4 | Contact Resistance (Initial) | | 10m Ohms. Max. |
| 5 | Insulation Resistance at 500 V DC | | 100M Ohms Min. |
| 6 | H.V.Break Down Test (For 1-Minute) | | 1.5 KV AC |
| 7 | Mounting | | Panel, Snap-in. |
| 8 | Terminals | | Soldering, Fast on 6.30x0.80 |
| 9 | Electrical Life | | 10,000 Cycles Min. |
| 10 | Permissible Temp. | (a)With/Without Load | -25°C TO +75°C |
| | | (b)For Soldering | 270°C for 5 Sec Max. |
| 11 | Material | (a) Body | Nylon6,20%GF |
| | | (b) Cap | Nylon6,20%GF |
| | | (c) Terminals | Copper Alloy, Silver Plated |
| | | (d) Contacts | Silver & Copper Alloy, Silver Plated |
| 12 | Reference Standard | | IEC-1058-1 |
| 13 | Approval | |  (On-Request) |

Ordering Code

| Series | Current Rating | | Function | | Knob Printing | | Knob Color Code | | Terminal | | Approval | | |
|--------|----------------|-----|-----------|-----------|--------------------|---|-----------------|-------|-----------|-------------------|----------|-----------|---------------------|
| SS | 62CF | 6A | No.Suffix | ON-OFF-ON | ON-OFF-ON Printing | | 03 | Black | No.Suffix | 6.30X0.8, Fast On | Std | No Suffix | No Approval |
| | 162CF | 16A | | | P7 |  | 04 | Red | | | | T5B | 6.30X0.8, Drop Hole |

Ordering Code

Dust Cap Code: RS-DC-02

| | | | | | | | | | | |
|----------------|-----|-----|-----------|---|---------|------|---|--------|---|--|
| | | | | | | APP | 09.11.19 | GJG |  <p>Plot E-4, Kagal Five Star MIDC, Kagal, Kolhapur, MH - 416236, India</p> <p>Elcom International Pvt. Ltd.</p> <p>www.elcom-in.com</p> | |
| | | | | | | CHK | | | | |
| | | | | | | DRN | 09.11.19 | MDT | | |
| REV | IS | WAS | DATE | SIGN | APP. | BY | DATE | SIGN | | |
| UNSP.TOLERANCE | | | DIMNS. IN | WT(Gm) | SCALE:- | | PROJECTION | SHEET | DRAWING NUMBER | |
| OVER | - | 1 | 10 | mm | Max. | NTS. |  | 2 OF 2 | | |
| UP TO | 1 | 10 | - | Moulding, plating details as per Bill of Material | | | | | REVISION | |
| ± | 0.2 | 0.3 | 0.5 | Unspecified colour is Black, GF:Glass filled. | | | | | 0 | |

F:ENG-08.00

Note: Technical specifications are subject to change without prior notice

Copyright © 2022 by Elcom International Pvt.Ltd, India. All rights reserved