

General Purpose AC EMI Filter

Approvals /Conformance



*Image shown is for illustrative purpose only



Technical Specifications

Operating voltage	250VAC(P-N)/440VAC(P-P)
Current rating	3A - 40A
Frequency	50/60Hz
Voltage drop	1 Volt max.
High potential test voltage	P -> E 1500VAC P -> N 2121VDC (applicable for excluding surge suppressor filter)
Insulation resistance	≥ 300 MΩ @ 500VDC (PN→E)
Operating temperature	40°C /-25°C +85°C

Features and benefits

- | Filters available in single stage
- | All filters provide high attenuation performance.
- | All filters compliance to EN60939-3:2015 & EN60939-2:2005 standards.
- | High reliable
- | Chassis mountable filter in fabricated metal can.
- | CRCA metal can with nickel plating provides good aesthetic and corrosion protection.
- | General purpose filters with low leakage current for safety critical application.
- | With surge suppressor filters also available.
- | Various terminal options are available.

Application

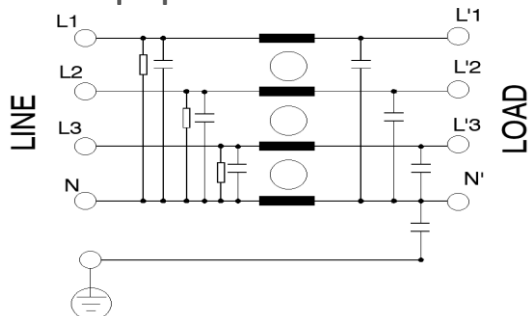
- | Defence application
- | Industrial application
- | UPS
- | Inverters and converters
- | Electrical equipment application
- | Laser cutting tools
- | Test and measurement instruments

Attenuation type

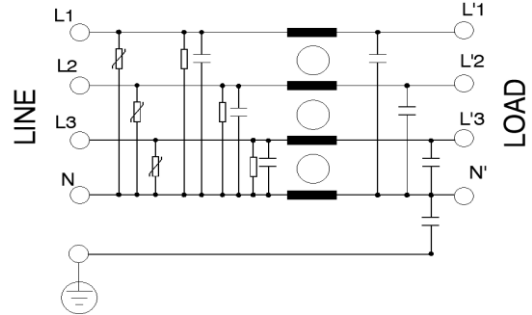
Single Stage **Standard**

Electrical schematic for filter:

General purpose –



General purpose with Surge Suppressor -

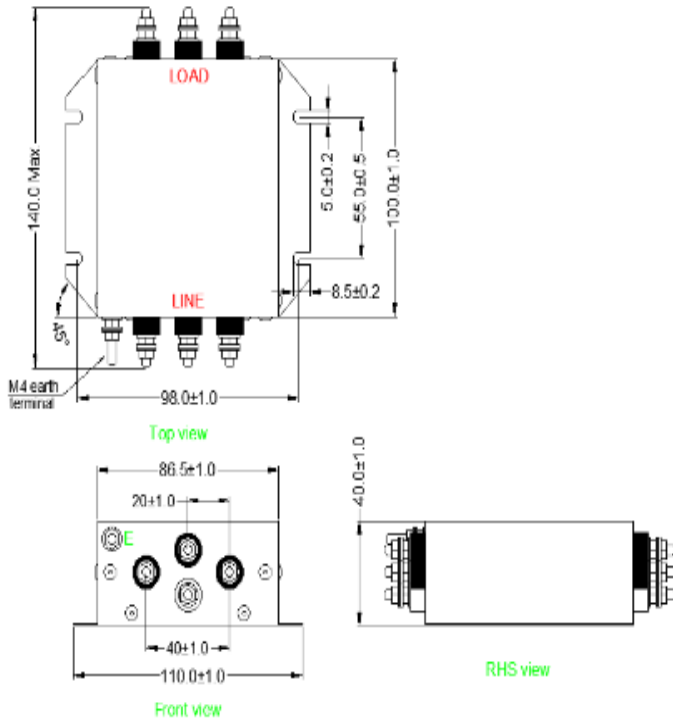


Datasheet | EC71 EP-355WN Series

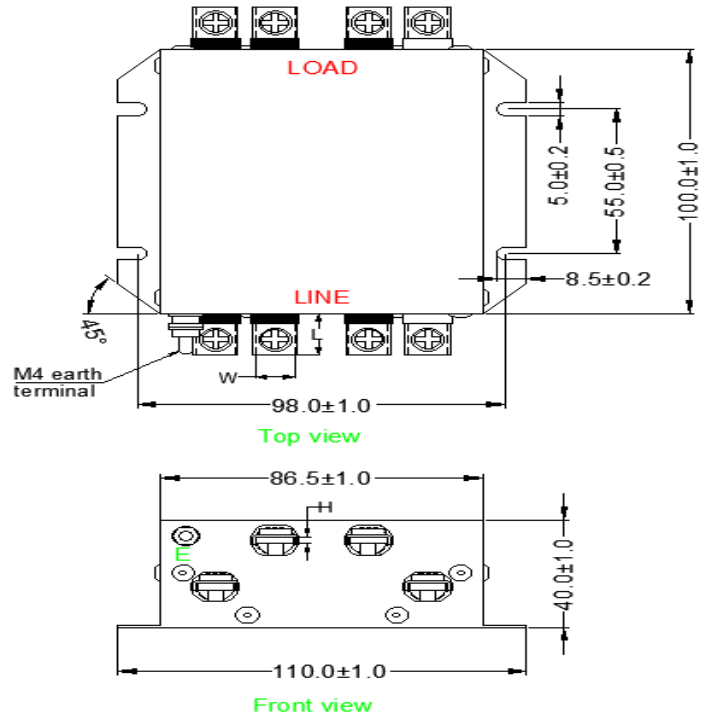


Mechanical Details

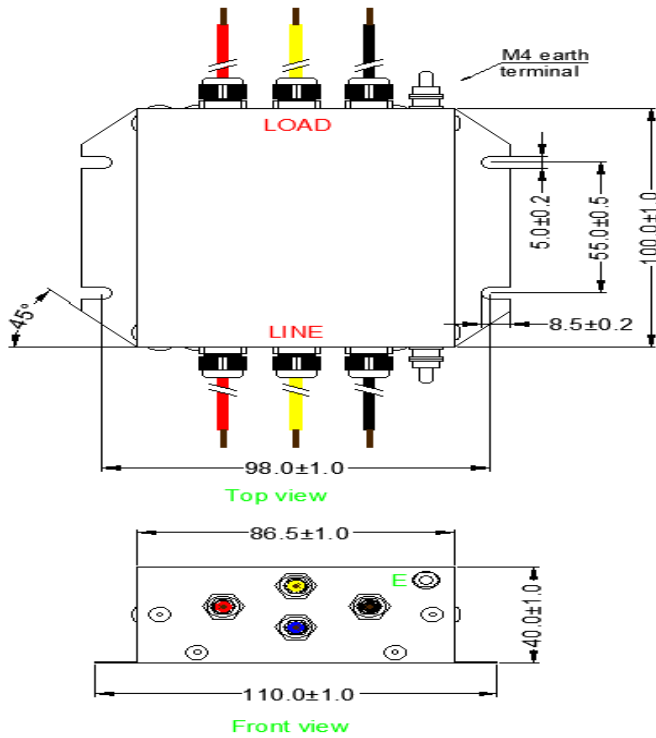
Screw terminal



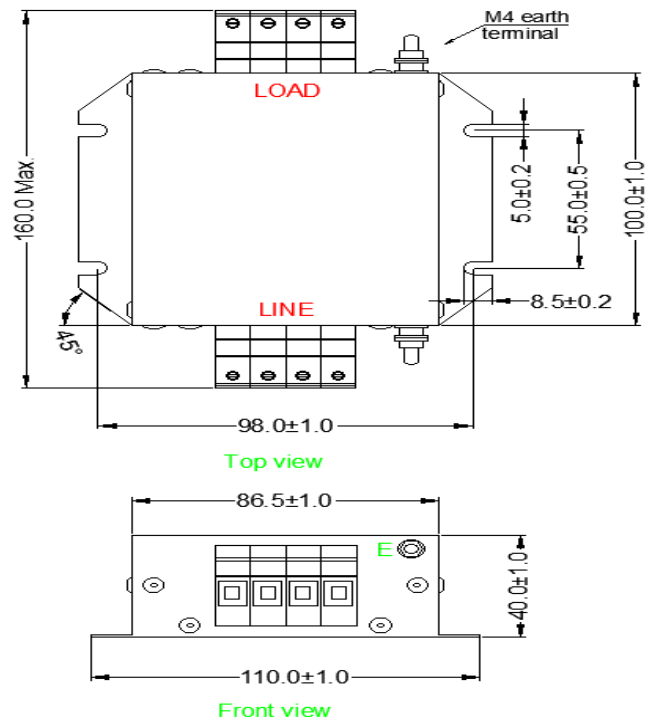
Bus-bar terminal



Wire Terminal



Touch Safe Terminal



All dimensions in mm

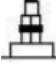



-Over 40A current rating touch will be unstackable

Datasheet | EC71

EP-355WN Series



Filter Selection Table

Sr. No.	Elcom part codes (ordering code)	Rated Current rating (A) @40°C	Leakage current (mA) @440VAC	Terminals (X)				Max. Peak current (8/20 μ sec 1 time) (KA)	Energy surge rating (10/1000 μ sec) (Joules)	Weight (gm)	Attenuation
				Screw 	Bus bar 	Touch-safe 	Wire 				
1	EF-3P003X01E-C71	3	< 0.5	D	E	F	G	----	----	500	Standard
2	EF-3P003X02E-C71	3	< 0.5	D	E	F	G	6.5	175	500	Standard
3	EF-3P006X01E-C71	6	< 0.5	D	E	F	G	----	----	500	Standard
4	EF-3P006X02E-C71	6	< 0.5	D	E	F	G	6.5	175	500	Standard
5	EF-3P010X01E-C71	10	< 0.5	D	E	F	G	----	----	500	Standard
6	EF-3P010X02E-C71	10	< 0.5	D	E	F	G	6.5	175	500	Standard
7	EF-3P015X01E-C71	15	< 1.0	D	E	F	G	----	----	500	Standard
8	EF-3P015X02E-C71	15	< 1.0	D	E	F	G	10	350	500	Standard
9	EF-3P020X01E-C71	20	< 1.0	D	E	F	G	----	----	500	Standard
10	EF-3P020X02E-C71	20	< 1.0	D	E	F	G	10	350	500	Standard
11	EF-3P025X01E-C71	25	< 1.0	D	E	F	G	----	----	500	Standard
12	EF-3P025X02E-C71	25	< 1.0	D	E	F	G	10	350	500	Standard
13	EF-3P030X01E-C71	30	< 1.0	D	E	F	G	----	----	500	Standard
14	EF-3P030X02E-C71	30	< 1.0	D	E	F	G	10	350	500	Standard
15	EF-3P040X01E-C71	40	< 1.0	D	E	F	G	----	----	500	Standard
16	EF-3P040X02E-C71	40	< 1.0	D	E	F	G	10	350	500	Standard

- To compile complete part number, replace the 'X' with required I/O connection terminal. (e.g. EF-3P010D01E-C71)
- Recommended tightening torque for touch safe – for 6 sqmm. – 10.6-13 lbf.in., and for screw terminal-M4 tightening torque 12 Kgcm max.
- Maximum leakage under usual AC operating conditions (acc. IEC 60939-3). Note: if the neutral line is interrupted, worst case leakage could reach twice this level.
- Customize products provided on request.

Datasheet | EC71

EP-355WN Series



Connection Method

Current Rating (A)	Screw terminal	Bus bar (LxWxH) & connection screw terminal	Touch safe	Wire terminal(AWG)	Earthing
3	M4	12x10x2.5 & M4	6 Sq.mm	18AWG	M4
6	M4	12x10x2.5 & M4	6 Sq.mm	18AWG	M4
10	M4	12x10x2.5 & M4	6 Sq.mm	14AWG	M4
15	M4	12x10x2.5 & M4	6 Sq.mm	14AWG	M4
20	M4	12x10x2.5 & M4	6 Sq.mm	12AWG	M4
25	M4	12x10x2.5 & M4	6 Sq.mm	10AWG	M4
30	M4	12x10x2.5 & M4	6 Sq.mm	10AWG	M4
40	M4	12x10x2.5 & M4	6 Sq.mm	8 AWG	M4

Filter attenuation graph

C = Common mode (asymmetrical) —————

D = Differential mode (symmetrical) - - - - -

For general application (Single Stage)

