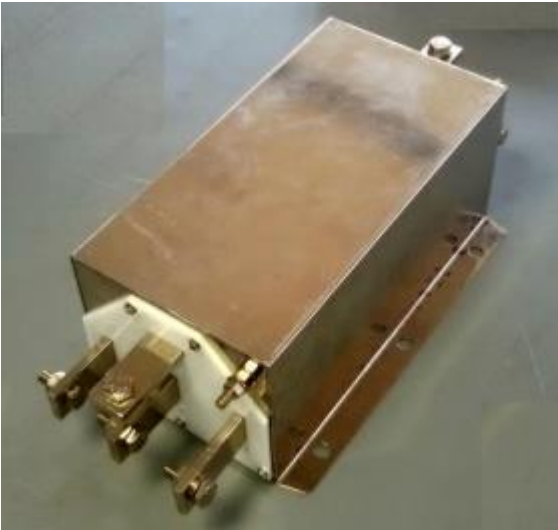


## General Purpose AC EMI Filter



\*Image shown is for illustrative purpose only

## Features and benefits

- | Filters available in single stage
- | All filters provide high attenuation performance.
- | All filters compliance to EN60939-3:2015 & EN60939-2:2005 standards.
- | High reliable
- | Chassis mountable filter in fabricated metal can.
- | CRCA metal can with nickel plating provides good aesthetic and corrosion protection.
- | General purpose filters with low leakage current for safety critical application.
- | With surge suppressor filters also available.
- | Various terminal options are available.

## Application

- | Defence application
- | Industrial application
- | UPS
- | Inverters and converters
- | Electrical equipment application
- | Laser cutting tools
- | Test and measurement instruments

## Approvals /Conformance



## Technical Specifications

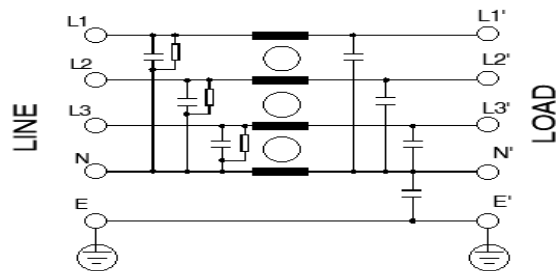
|                             |   |
|-----------------------------|---|
| Operating voltage           | 250VAC(P-N)/440VAC(P-P)   |
| Current rating              | 700A - 1000A  |
| Frequency                   | 50/60Hz   |
| Voltage drop                | 1 Volt max.   |
| High potential test voltage | P -> E 1500VAC<br>P -> N 2121VDC (applicable for excluding surge suppressor filter) |
| Insulation resistance       | ≥ 300 MΩ @ 500VDC (PN→E)  |
| Operating temperature       | 40°C /-25°C +85°C   |

## Attenuation type

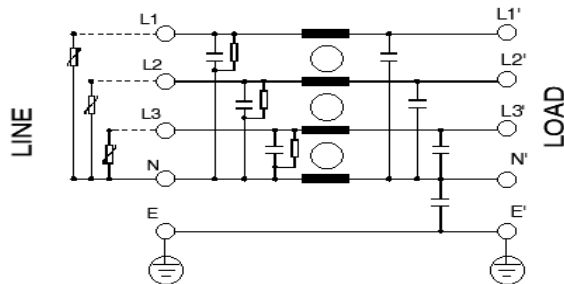
Single Stage

**Standard**

## Electrical schematic for Single Stage filter: General purpose –



## General purpose with external surge suppressor -

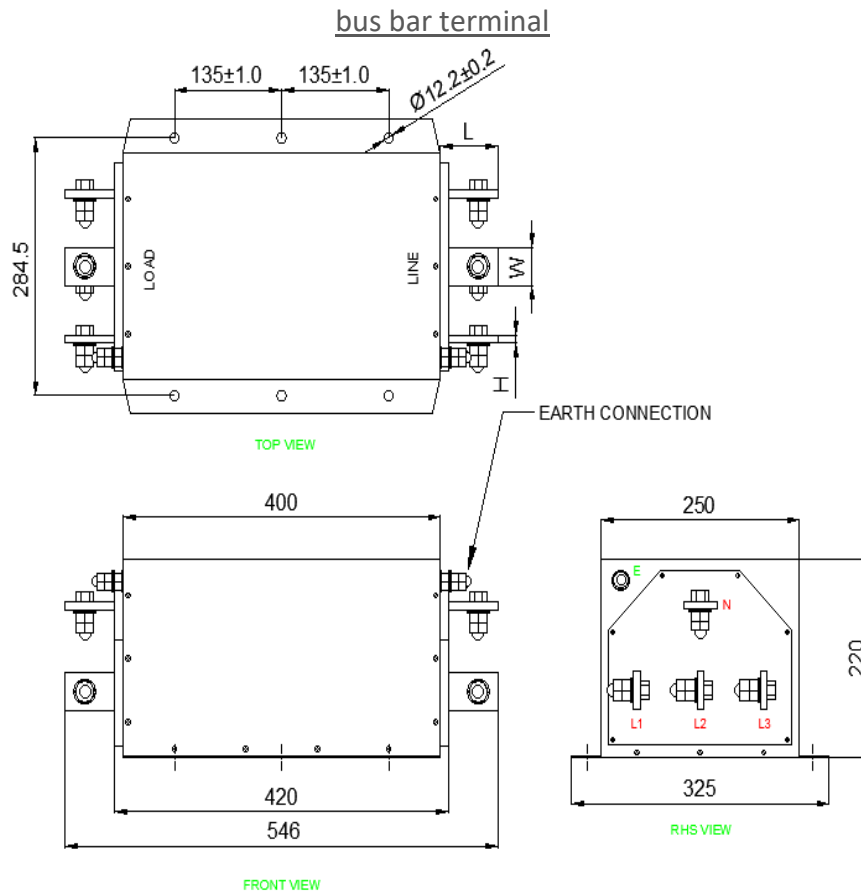


# Datasheet | EC84

## EP-355WN Series



### Mechanical Details



All dimensions in mm  
General tolerance = ±2%

### Filter Selection Table

| Sr. No. | Elcom part codes (ordering code) | Rated Current rating (A) @40°C | Leakage current (mA) @440VAC | Terminals (X) | Max. Peak current (8/20 μ sec 1 time) (KA) | Energy surge rating (10/1000 μ sec) (Joules) | Approx. Weight (Kg) | Attenuation |
|---------|----------------------------------|--------------------------------|------------------------------|---------------|--|--|---------------------|-------------|
|         |                                  |                                |                              | Bus bar       |  |  |                     |             |
| 1       | EF-3P700E01E-C84                 | 700                            | < 1.0                        | E             | ----                                       | ----   | 30                  | Standard    |
| 2       | EF-3P700E12E-C84                 | 700                            | < 1.0                        | E             | 10   | 350  | 30                  | Standard    |
| 3       | EF-3P800E01E-C84                 | 800                            | < 1.0                        | E             | ----                                       | ----   | 35                  | Standard    |
| 4       | EF-3P800E12E-C84                 | 800                            | < 1.0                        | E             | 10   | 350  | 35                  | Standard    |
| 5       | EF-3P1K0E01E-C84                 | 1000                           | < 1.0                        | E             | ----                                       | ----   | 40                  | Standard    |
| 6       | EF-3P1K0E12E-C84                 | 1000                           | < 1.0                        | E             | 10   | 350  | 40                  | Standard    |

# Datasheet | EC84

## EP-355WN Series



- Maximum leakage under usual AC operating conditions (acc. IEC 60939-3). Note: if the neutral line is interrupted, worst case leakage could reach twice this level.
- With surge suppressor filter available with externally connected surge suppressor unit.
- Customize products provided on request.

### Connection Method

| Current Rating (A) | Bus bar (LxWxH) & connection screw terminal | Earthing |
|--------------------|---|----------|
| 700                | 73x40x10 & M10                              | M10      |
| 800                | 73x40x10 & M10                              | M10      |
| 1000               | 73x40x12 & M10                              | M10      |

### Filter attenuation graph

C = Common mode (asymmetrical) —————

D = Differential mode (symmetrical) - - - - -

For general application (Single Stage)

