

## General Purpose AC EMI Filter



\*Image shown is for illustrative purpose only

## Features and benefits

- | Filters available in single stage and double stage
- | All filters provide high attenuation performance.
- | Two stage filters designed for noisy application requiring excellent filter performance.
- | All filters compliance to EN60939-3:2015 & EN60939-2:2005 standards.
- | High reliable
- | Chassis mountable filter in fabricated metal can.
- | CRCA metal can with nickel plating provides good aesthetic and corrosion protection.
- | Various terminal options are available.

## Application

- | Industrial application
- | Automotive application
- | Audio video products
- | Power supplies.
- | Electrical equipment application
- | UPS/inverter

## Conformance



## Technical Specifications

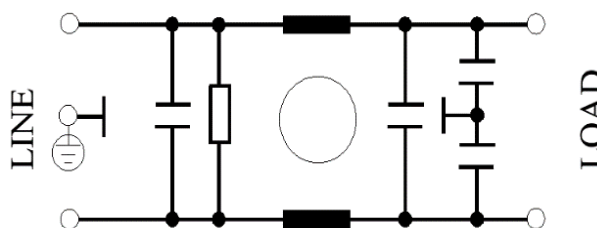
Operating voltage	120/250 VAC
Current rating	300A-650A
Frequency	50/60Hz
Voltage drop	1 Volt max.
High potential test voltage	P -> E 1500VAC
Insulation resistance	≥ 300 MΩ @ 500VDC (PN→E)
Operating temperature	40°C / -25°C +85°C

## Attenuation type

Single Stage	Standard
Double Stage	High

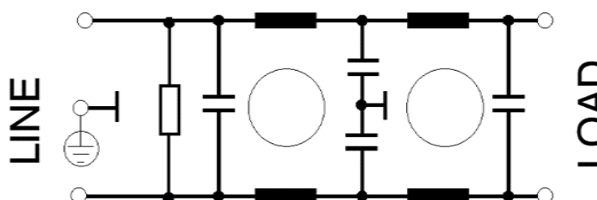
## Electrical schematic for Single Stage filter:

General purpose –

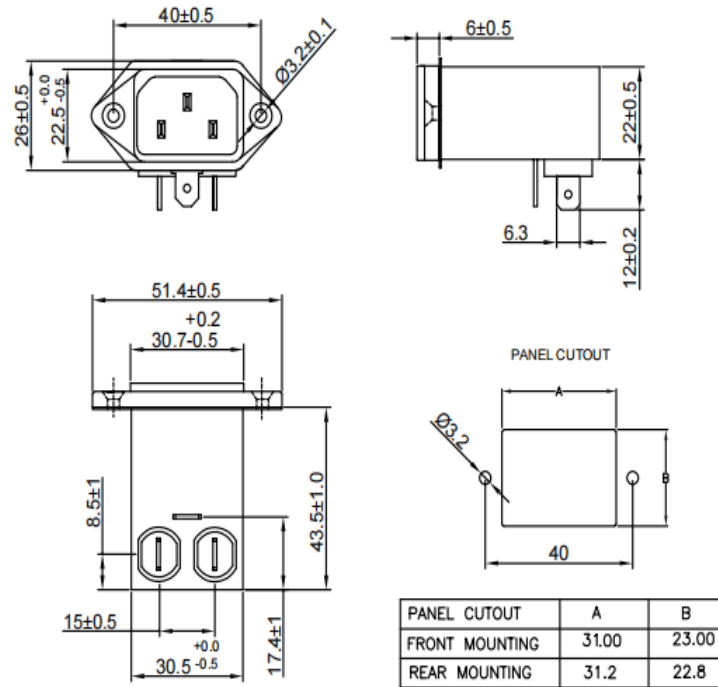


## Electrical schematic for Double Stage Filter:

General Purpose-



#### Bus-bar terminal



\*All dimensions in mm.

#### Filter Selection Table

Sr. No.	Elcom part codes (ordering code)	Rated Current rating (A) @40°C	Leakage current (mA) @250VAC	Approx. Weight (Kg)	Attenuation
1	EF-1B300E01G-21	300	< 0.5	10	Standard
2	EF-1B350E01G-21	350	< 0.5	10	Standard
3	EF-1B400E01G-21	400	< 0.5	11	Standard
4	EF-1B450E01G-21	450	< 0.5	11	Standard
5	EF-1B500E01G-21	500	< 0.5	12	Standard
6	EF-1B550E01G-21	550	< 0.5	12	Standard
7	EF-1B600E01G-21	600	< 0.5	12	Standard
8	EF-1B650E01G-21	650	< 0.5	12	Standard
9	EF-1B300E20G-21	300	< 0.5	10	High
10	EF-1B350E20G-21	350	< 0.5	10	High
11	EF-1B400E20G-21	400	< 0.5	11	High
12	EF-1B450E20G-21	450	< 0.5	11	High

# Datasheet | EC21

## EP-612 Series



13	EF-1B500E20G-21	500	< 0.5	12	High
14	EF-1B550E20G-21	550	< 0.5	12	High
15	EF-1B600E20G-21	600	< 0.5	12	High
16	EF-1B650E20G-21	650	< 0.5	12	High

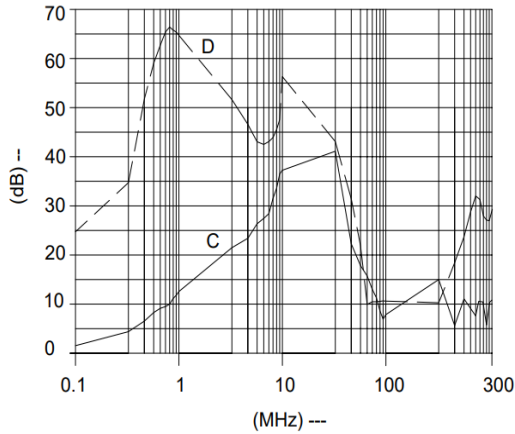
- Product having CE and RoHS compliance only.
- Maximum leakage under usual AC operating conditions (acc. IEC 60939-3). Note: if the neutral line is interrupted, worst case leakage could reach twice this level.
- Customize products provided on request.

### Filter attenuation graph

C = Common mode (asymmetrical) —————

D = Differential mode (symmetrical) -----

For general application (Single Stage)  
**300A-650A**



For general application (Double Stage)  
**300A-650A**

