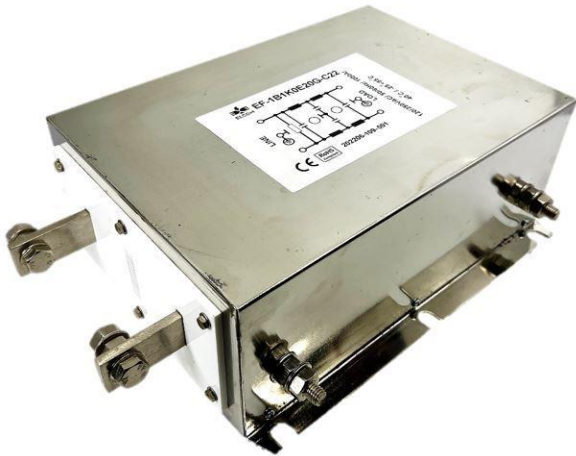


Datasheet | EC22

EP-612 Series



General Purpose AC EMI Filter



*Image shown is for illustrative purpose only

Conformance



Technical Specifications

Operating voltage	120/250 VAC
Current rating	700A-1000A
Frequency	50/60Hz
Voltage drop	1 Volt max.
High potential test voltage	P -> E 1500VAC
Insulation resistance	≥ 300 MΩ @ 500VDC (PN→E)
Operating temperature	40°C / -25°C +85°C

Features and benefits

- Filters available in single stage and double stage
- All filters provide high attenuation performance.
- Two stage filters designed for noisy application requiring excellent filter performance.
- All filters compliance to EN60939-3:2015 & EN60939-2:2005 standards.
- High reliable
- Chassis mountable filter in fabricated metal can.
- CRCA metal can with nickel plating provides good aesthetic and corrosion protection.

Application

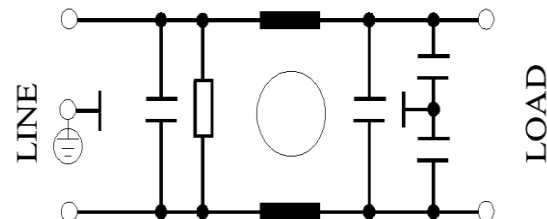
- Industrial application
- Automotive application
- Audio video products
- Power supplies.
- Electrical equipment application
- UPS/inverter

Attenuation type

Single Stage	Standard
Double Stage	High

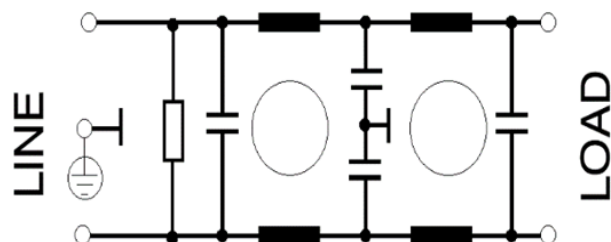
Electrical schematic for Single Stage filter:

General purpose –

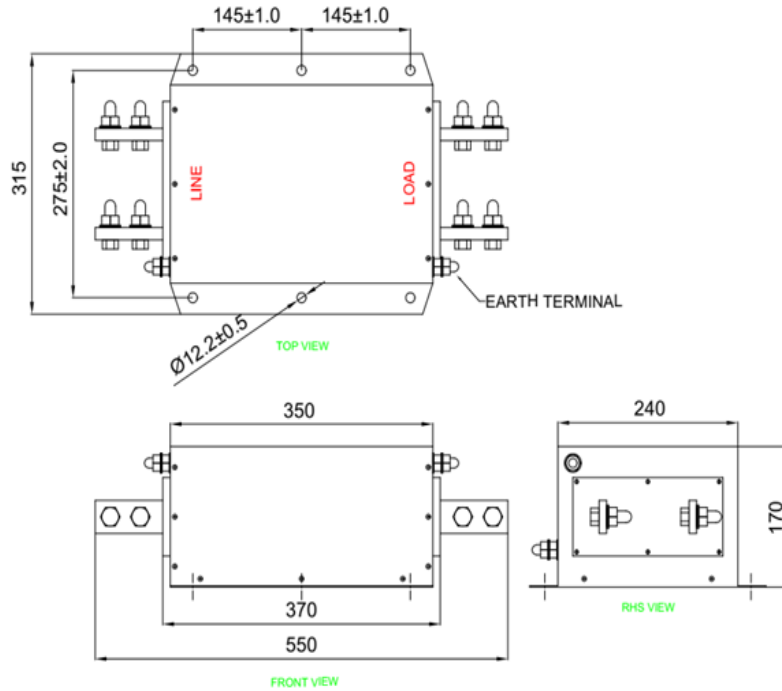


Electrical schematic for Double Stage Filter:

General Purpose-



Bus-bar terminal



*All dimensions in mm.

Filter Selection Table

Sr. No.	Elcom part codes (ordering code)	Rated Current rating (A) @40°C	Leakage current (mA) @250VAC	Approx. Weight (Kg)	Attenuation
1	EF-1B700E01G-22	700	< 0.5	14	Standard
2	EF-1B800E01G-22	800	< 0.5	14	Standard
3	EF-1B1K0E01G-22	1000	< 0.5	15	Standard
4	EF-1B700E20G-22	700	< 0.5	14	High
5	EF-1B800E20G-22	800	< 0.5	14	High
6	EF-1B1K0E20G-22	1000	< 0.5	15	High

- Product having CE and RoHS compliance only.
- Maximum leakage under usual AC operating conditions (acc. IEC 60939-3). Note: if the neutral line is interrupted, worst case leakage could reach twice this level.
- Customize products provided on request.

Datasheet | EC22

EP-612 Series

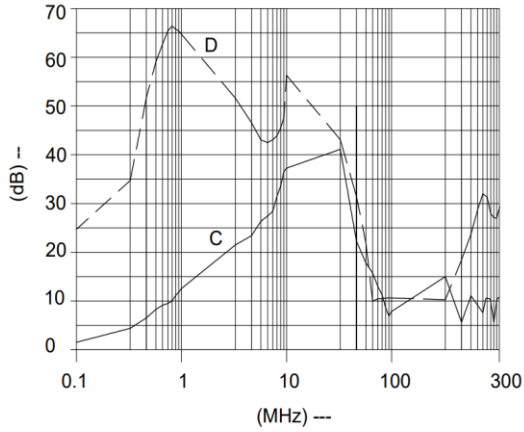


Filter attenuation graph

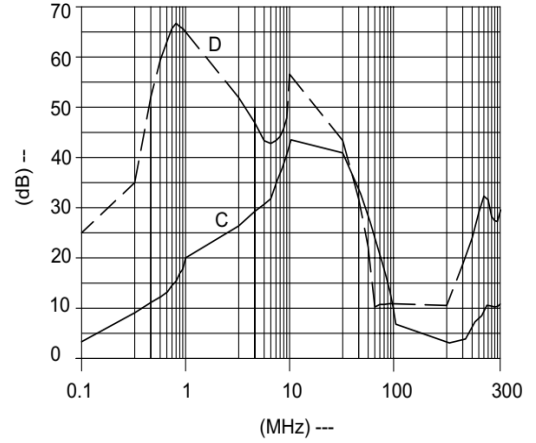
C = Common mode (asymmetrical) —————

D = Differential mode (symmetrical) - - - - -

For general application (Single Stage)
700A-1000A



For general application (Double Stage)
700A-1000A



Copyright © 2022 by Elcom International Pvt.Ltd, India. All rights reserved

The content of this document has been carefully checked and understood. However, Elcom not assume any liability whatsoever for any errors or inaccuracies of this document and the consequences thereof. Published specifications are subject to change without notice. Product suitability for any area of application must ultimately be determined by the customer