

High attenuation AC EMI Filter



*Image shown is for illustrative purpose only

Conformance



Technical Specifications

Operating voltage	440VAC (P-P)
Current rating	50A-80A
Frequency	50/60Hz
Voltage drop	1 Volt max.
High potential test voltage	P -> E 1500VAC
Insulation resistance	≥ 300 MΩ @ 500VDC (PN→E)
Operating temperature	40°C / -25°C +85°C

Features and benefits

- Filters available in single & double stage
- All filters provide high attenuation performance.
- Two stage filters designed for noisy application requiring excellent filter performance.
- All filters compliance to EN60939-3:2015 & EN60939-2:2005 standards.
- High reliable
- Easy and fast chassis mountable filter with compact size.
- CRCA metal can with nickel plating provides good aesthetic and corrosion protection.
- Various terminal options are available

Application

- Consumer product
- Defence application
- Industrial application
- Automotive application
- Printing Machinery
- Electrical equipment application

Attenuation type

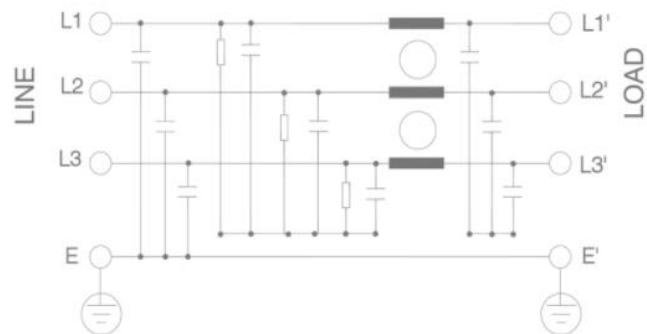
Single Stage

Standard

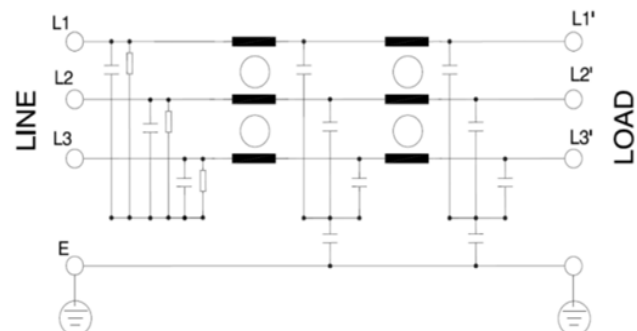
Double Stage

High

Electrical schematic for Single stage filter :

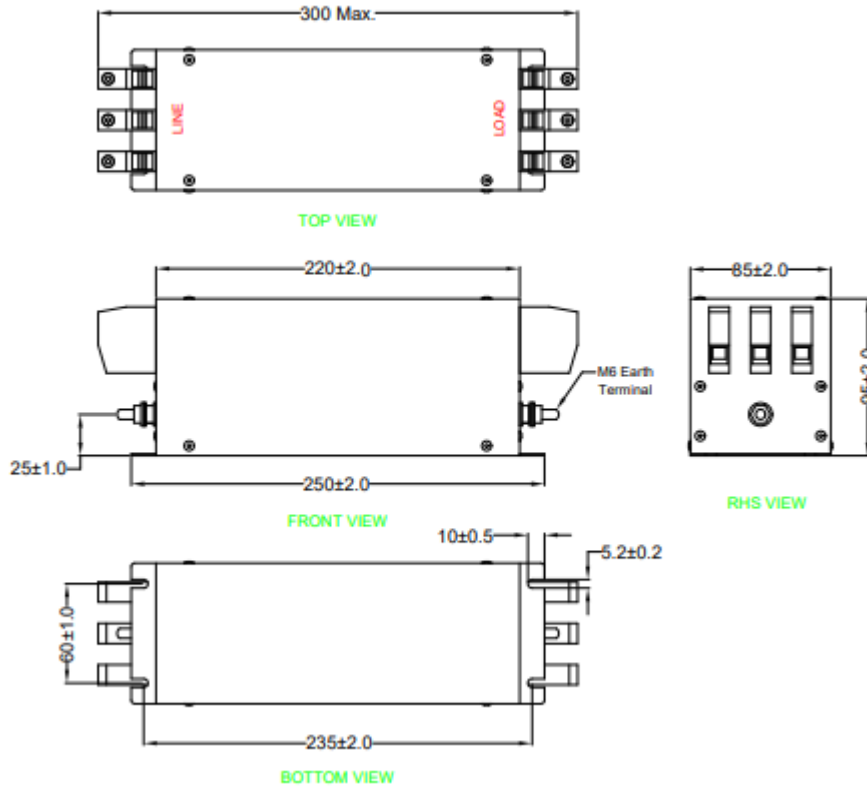


Electrical schematic for Double stage filter:





Mechanical Details

Touch safe terminal



*All dimensions are in mm.
General tolerance=±2%

Filter Selection Table

Sr. No.	Elcom part codes (ordering code)	Current rating (A)	Leakage current (mA) @440V AC	Terminals (X)		Weight (Kg)	Attenuation
				Screw 	Touch -safe 		
1	EF-3A050X01G-C53	50	< 3.5	D	F	1.8	Standard
2	EF-3A060X01G-C53	60	< 3.5	D	F	1.8	Standard
2	EF-3A080X01G-C53	80	< 3.5	D	F	1.8	Standard
4	EF-3A050X20G-C53	50	< 3.5	D	F	2	High
5	EF-3A060X20G-C53	60	< 3.5	D	F	2	High

- To compile complete part number, replace the 'X' with required I/O connection terminal. (e.g. EF-3A050D20G-C53)
- Customize products provided on request.

Connection Method

Current Rating (A)	Screw terminal details		Touch safe terminal details		Earthing screw terminal details
	Screw	Recommended tightening torque	Touch safe	Recommended tightening torque	
50	M6	20-25Kgcm	16 Sq.mm	22-25 lbf.in	M6
60	M6	20-25Kgcm	16 Sq.mm	22-25 lbf.in	M6
80	M8	25-30Kgcm	16 Sq.mm	22-25 lbf.in	M6

Filter attenuation graph

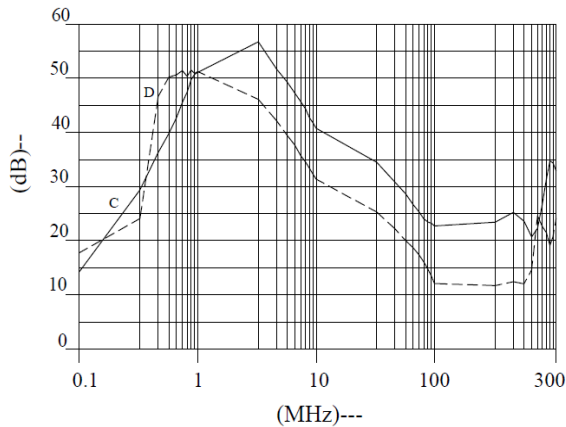
C = Common mode (asymmetrical) —————

D = Differential mode (symmetrical) - - - - -

For single stage

For double stage

50A-80A



50A-60A

