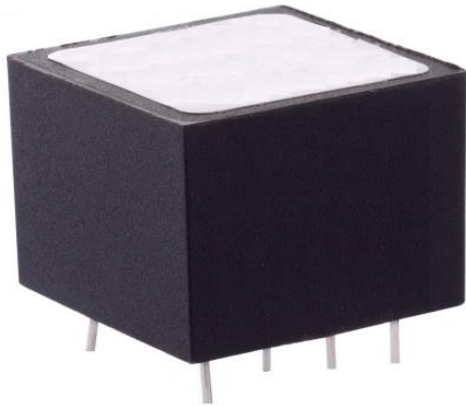


Datasheet | EA01 DC filter EP-402 Series



General Purpose AC EMI Filter



*Image shown is for illustrative purpose only

Conformance



Technical Specifications

Operating voltage	12 VDC
Current rating	6A
Voltage drop	1 Volt max.
High potential test voltage	+,- to E 1500VAC
Insulation resistance	≥ 300 MΩ @ 500VDC (+,- to E)
Operating temperature	40°C / -25°C +85°C

Features and benefits

- | All filters provide high attenuation performance.
- | All filters compliance to EN60939-3:2015 & EN60939- 2:2005 standards.
- | Compact PCB-mountable design.
- | High reliable.
- | Plastic housing with good aesthetic.
- | Single stage.
- | Input and output connection through soldering pins.
- | Cost effective solution.

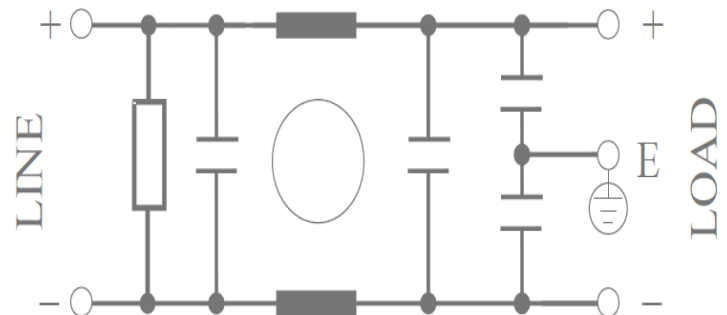
Application

- | Modems
- | Network Routing Equipment
- | Servers
- | Ethernet Hubs
- | Base Stations
- | Power Supplies
- | Photovoltaic Inverters
- | DC Motor Drives
- | DC Chargers
- | Frequency Inverters
- | Energy Systems

Attenuation type

Single Stage **Standard**

Electrical schematic for filter:

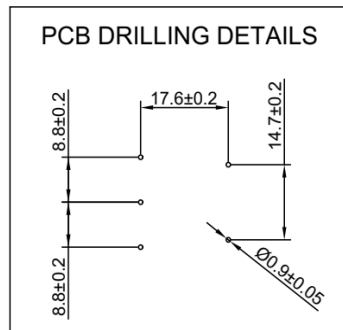
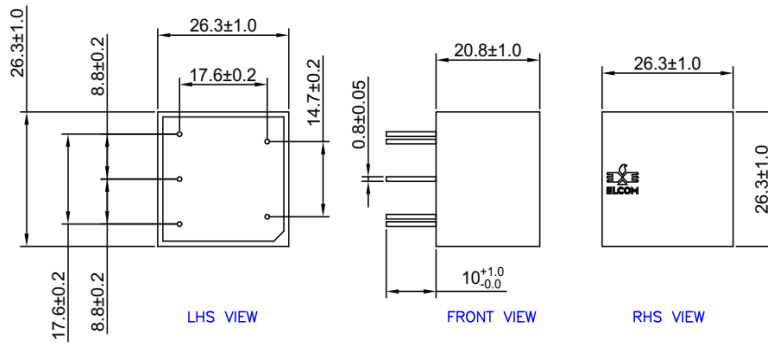


Datasheet | EA01 DC filter

EP-402 Series



Mechanical Details



* All dimensions are in mm.

Note: For medical application filter, earthing terminal is not provided.

Filter Selection Table

Sr. No.	Elcom part codes (ordering code)	Rated Current rating (A) @40°C	Pin-type terminal	Approx. weight (gm)	Attenuation
1	EF-4A006A01G-A01	6	A	25	Standard

- Customize products provided on request.

Connection Method

Current Rating (A)	Connection
6	Pin type terminal

Filter attenuation graph

C = Common mode (asymmetrical) —————

D = Differential mode (symmetrical) - - - - -

