

Datasheet | EB06

EP-372-F2 Series



General Purpose AC EMI Filter



*Image shown is for illustrative purpose only

Approvals /Conformance



Technical Specifications

Operating voltage	120/250 VAC
Current rating	1A - 10A
Frequency	50/60Hz
Voltage drop	1 Volt max.
High potential test voltage	P -> E 1500VAC P -> N 1414VDC (applicable excluding surge suppressor filter)
Insulation resistance	$\geq 300 \text{ M}\Omega @ 500\text{VDC (PN} \rightarrow \text{E)}$
Operating temperature	40°C / -25°C +85°C

Features and benefits

- | All filters provide high attenuation performance.
- | All filters compliance to EN60939-3:2015 & EN60939-2:2005 standards.
- | Filter available in panel mounting provision.
- | Single stage.
- | High reliable.
- | CRCA metal can with nickel plating provides good aesthetic and corrosion protection.
- | Input connection through IEC 60320 C14 plug.
- | Output connection with fast-on or wire terminal
- | Filters available in medical version without capacitor to earth.
- | With surge suppressor filters also available.

Application

- | Portable electrical and electronic equipment
- | Datacom equipment
- | Control Panel
- | Medical equipment
- | SMPS
- | Test and measurement equipment

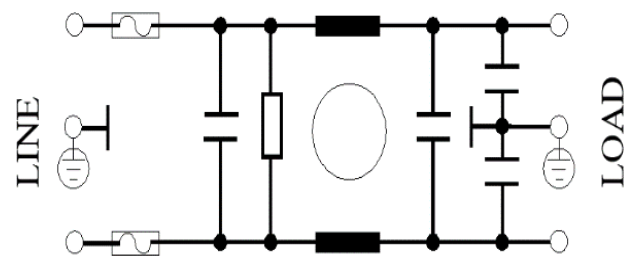
Attenuation type

Single Stage

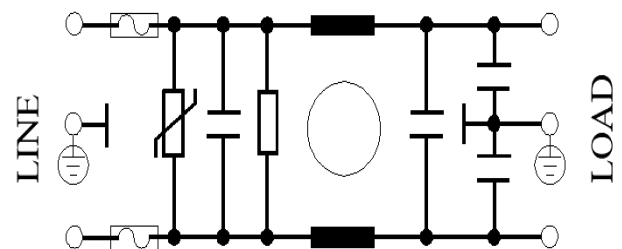
Standard

Electrical schematic for filter:

General purpose –



General purpose with surge suppressor –



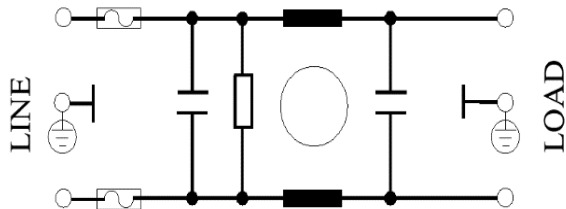
Datasheet | EB06

EP-372-F2 Series

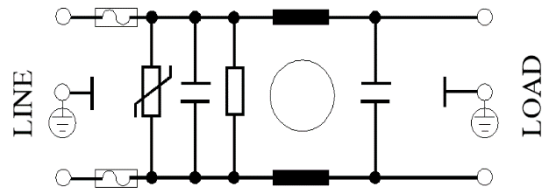
Electrical schematic for filter :



Medical equipment application –

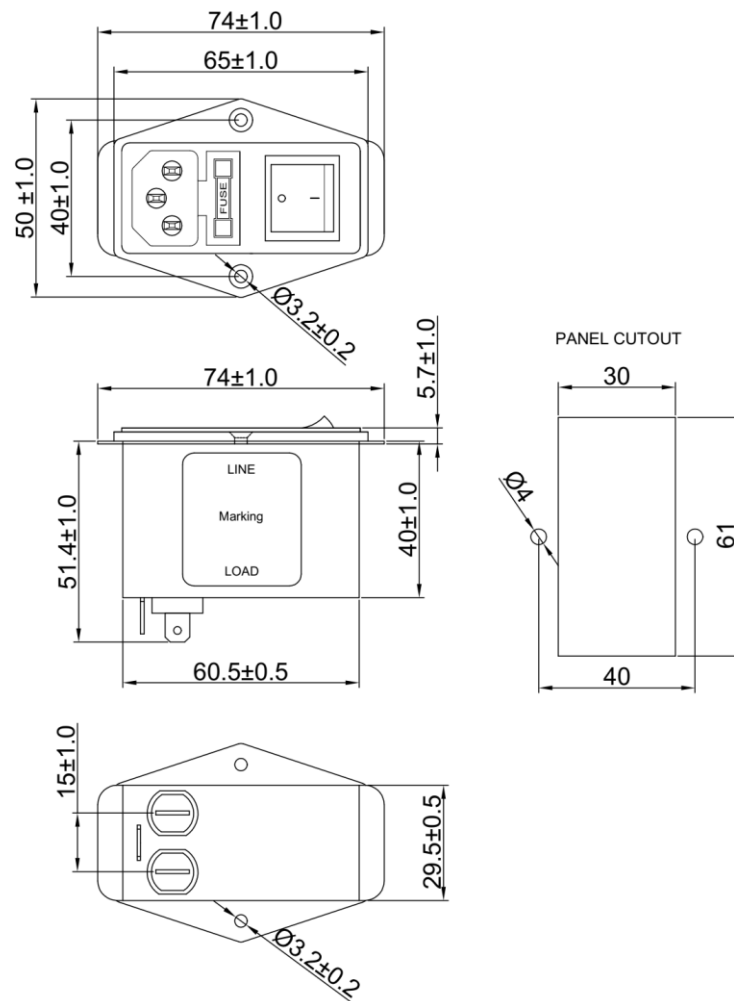


Medical equipment application with surge suppressor -



Mechanical Drawing

Fast-on terminal



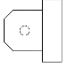
All dimensions in mm.
General tolerance $\pm 1\%$

Datasheet | EB06

EP-372-F2 Series



Product Selection Table:

Sr. No.	Elcom part codes (ordering code)	Rated Current rating (A) @40°C	Leakage current (mA) @ 250V AC	Terminal Fast-on 	Max. Peak current (8/20 μ sec 1 time) (KA)	Energy surge rating (10/1000 μ sec) (Joules)	Approx. weight (gm)	Attenuatio n
1	EF-1B001B01E- B06	1	< 0.5	B	----	----	150	Standard
2	EF-1B001B02E- B06	1	< 0.5	B	6.5	175	150	Standard
3	EF-1B001B03E- B06	1	< 0.003	B	----	----	150	Standard
4	EF-1B001B04E- B06	1	< 0.003	B	6.5	175	150	Standard
5	EF-1B003B01E- B06	3	< 0.5	B	----	----	150	Standard
6	EF-1B003B02E- B06	3	< 0.5	B	6.5	175	150	Standard
7	EF-1B003B03E- B06	3	< 0.003	B	----	----	150	Standard
8	EF-1B003B04E- B06	3	< 0.003	B	6.5	175	150	Standard
9	EF-1B006B01E- B06	6	< 0.5	B	----	----	150	Standard
10	EF-1B006B02E- B06	6	< 0.5	B	6.5	175	150	Standard
11	EF-1B006B03E- B06	6	< 0.003	B	----	----	150	Standard
12	EF-1B006B04E- B06	6	< 0.003	B	6.5	175	150	Standard
13	EF-1B010B01E- B06	10	< 0.5	B	----	----	150	Standard
14	EF-1B010B02E- B06	10	< 0.5	B	6.5	175	150	Standard
15	EF-1B010B03E- B06	10	< 0.003	B	----	----	150	Standard
16	EF-1B010B04E- B06	10	< 0.003	B	6.5	175	150	Standard

- Maximum leakage under usual AC operating conditions (acc. IEC 60939-3). Note: if the neutral line is interrupted, worst case leakage could reach twice this level.
- Customize products provided on request.

Datasheet | EB06

EP-372-F2 Series



Connection Method

Current Rating (A)	Fast -on	Wire	Earthing
1, 3 & 6	4.8 X 0.8mm	18AWG	Fast-on/wire leads
10		14AWG	

Filter attenuation graph

C = Common mode (asymmetrical) —————
D = Differential mode (symmetrical) - - - - -

For general purpose

