

Datasheet | EC10 DC filter EP-612 Series



General Purpose AC EMI Filter



*Image shown is for illustrative purpose only

Features and benefits

- | Filters available in single stage and double stage
- | All filters provide high attenuation performance.
- | Two stage filters designed for noisy application requiring excellent filter performance.
- | All filters compliance to EN60939-3:2015 & EN60939-2:2005 standards.
- | High reliable
- | Chassis mountable filter in fabricated metal can.
- | CRCA metal can with nickel plating provides good aesthetic and corrosion protection.

Application

- | Modems
- | Network Routing Equipment
- | Servers
- | Ethernet Hubs
- | Base Stations
- | Power Supplies
- | Photovoltaic Inverters
- | DC Motor Drives
- | DC Chargers
- | Frequency Inverters
- | Energy Systems

Conformance



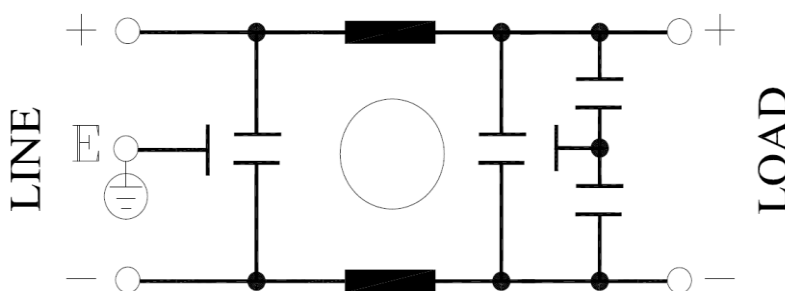
Technical Specifications

Operating voltage	48 VDC
Current rating	1A to 6 Amp
Voltage drop	1 Volt max.
High potential test voltage	+,- to E 1500VAC
Insulation resistance	≥ 300 MΩ @ 500VDC (+,- to E)
Operating temperature	40°C / -25°C +85°C

Attenuation type

Single Stage Standard

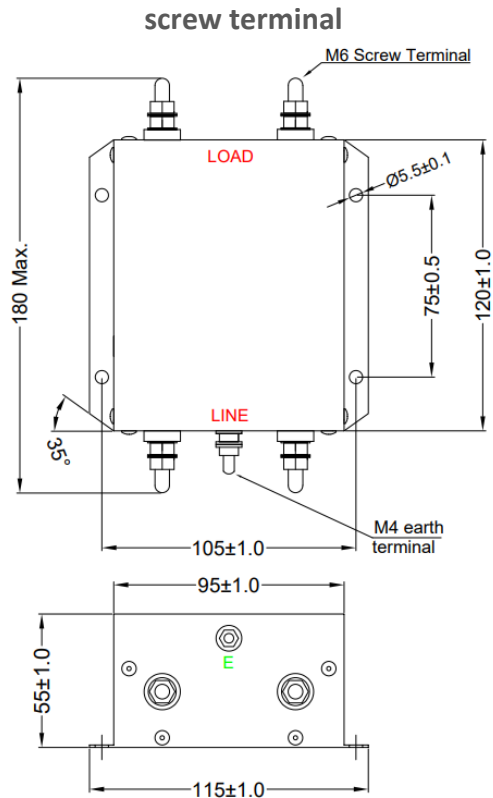
Electrical schematic for filter:



Datasheet | EC10 DC filter


EP-612 Series

Mechanical Details



All dimensions in mm
General tolerance=±2mm

Filter Selection Table

Sr. No.	Elcom part codes (ordering code)	Rated Current rating (A) @40°C	Terminals (X)	Approx. Weight (gm)	Attenuation
			Screw 		
1	EF-4C050X06G-C10	50	D	900	Standard
2	EF-4C075X01G-C10	75	D	900	Standard

- To compile complete part number, replace the 'X' with required I/O connection terminal. (e.g. EF-4C050D06G-C10)
- Customize products provided on request.

Connection Method

Current Rating (A)	Screw terminal	Earthing
50	M6	M4
75	M8	M4

Datasheet | EC10 DC filter

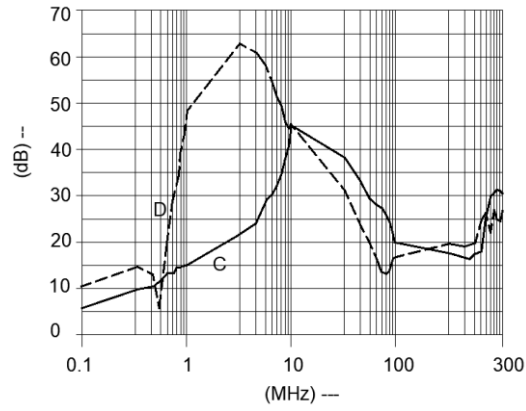
EP-612 Series



Filter attenuation graph

C = Common mode (asymmetrical) —————

D = Differential mode (symmetrical) - - - - -



Copyright © 2022 by Elcom International Pvt.Ltd, India. All rights reserved

The content of this document has been carefully checked and understood. However, Elcom not assume any liability whatsoever for any errors or inaccuracies of this document and the consequences thereof. Published specifications are subject to change without notice. Product suitability for any area of application must ultimately be determined by the customer